

Recombinant Human Kallikrein 11/KLK11 Protein (His Tag)



Catalog Number:PKSH033404

Note: Centrifuge before opening to ensure complete recovery of vial contents.

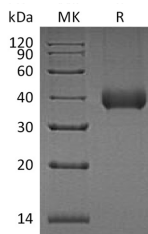
Description

Synonyms	Kallikrein-11;hK11;Hippostasin;Serine Protease 20;Trypsin-Like Protease;KLK11;PRSS20;TLSP
Species	Human
Expression Host	HEK293 Cells
Sequence	Glu19-Asn250
Accession	AAH22068
Calculated Molecular Weight	26.3 kDa
Observed molecular weight	38 kDa
Tag	C-His

Properties

Purity	> 95 % as determined by reducing SDS-PAGE.
Endotoxin	< 1.0 EU per µg of the protein as determined by the LAL method.
Storage	Store at < -20°C, stable for 6 months. Please minimize freeze-thaw cycles.
Shipping	This product is provided as liquid. It is shipped at frozen temperature with blue ice/gel packs. Upon receipt, store it immediately at < - 20°C.
Formulation	Supplied as a 0.2 µm filtered solution of 20mM Tris-HCl, 150mM NaCl, 2mM CaCl ₂ , pH 8.0.
Reconstitution	Not Applicable

Data



> 95 % as determined by reducing SDS-PAGE.

Background

Human Kallikrein 11 (KLK11) is a member of tissue kallikrein family which are extracellular serine proteases consisting of 15 members. Two isoforms of KLK11 are differentially expressed. Isoform 1 is predominantly expressed in brain and isoform 2 is preferentially expressed in prostate. Isoform 1 consists of a signal peptide;a short pro peptide and the mature chain.Isoform 2 contains an extra 32 amino acid N terminal to full-length isoform 1.KLK11 is a novel marker for ovarian and prostate cancer carcinomas. KLK11 can be activated by thermolysin and is active against a thioester substrate.

For Research Use Only

A Reliable Research Partner in Life Science and Medicine

Toll-free: 1-888-852-8623

Web: www.elabscience.com

Tel: 1-832-243-6086

Email: techsupport@elabscience.com

Fax: 1-832-243-6017