

Recombinant Human HtrA2/Omi Protein (His Tag)

Catalog Number:PKSH033408



Note: Centrifuge before opening to ensure complete recovery of vial contents.

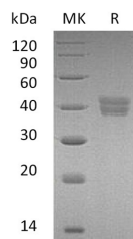
Description

Synonyms	Serine protease HTRA2;mitochondrial;High temperature requirement protein A2;HtrA2;Omi stress-regulated endoprotease;Serine protease 25;Serine proteinase OMI;HTRA2;OMI;PRSS25
Species	Human
Expression Host	HEK293 Cells
Sequence	Ala134-Glu458
Accession	O43464
Calculated Molecular Weight	36.0 kDa
Observed molecular weight	35-43 kDa
Tag	C-His

Properties

Purity	> 95 % as determined by reducing SDS-PAGE.
Endotoxin	< 1.0 EU per µg of the protein as determined by the LAL method.
Storage	Store at < -20°C, stable for 6 months. Please minimize freeze-thaw cycles.
Shipping	This product is provided as liquid. It is shipped at frozen temperature with blue ice/gel packs. Upon receipt, store it immediately at < - 20°C.
Formulation	Supplied as a 0.2 µm filtered solution of 4mM HCl.
Reconstitution	Not Applicable

Data



> 95 % as determined by reducing SDS-PAGE.

Background

High temperature requirement protein A2(HTRA2) is a single-pass membrane protein .It contains 1 PDZ (DHR) domain and belongs to the peptidase S1C family. HtrA2 can be released from the mitochondria during apoptosis and uses its four most N-terminal amino acids to mimic a caspase and be recruited by IAP caspase inhibitors such as XIAP and CIAP1/2. It promotes or induces cell death either by direct binding to and inhibition of BIRC proteins (also called inhibitor of apoptosis proteins, IAPs), leading to an increase in caspase activity, or by a BIRC inhibition-independent, caspase-independent and serine protease activity-dependent mechanism. The protein cleaves THAP5 and promotes its degradation during apoptosis.

For Research Use Only

A Reliable Research Partner in Life Science and Medicine

Toll-free: 1-888-852-8623

Web: www.elabscience.com

Tel: 1-832-243-6086

Email: techsupport@elabscience.com

Fax: 1-832-243-6017