

Recombinant Human Kallikrein 7/KLK7 Protein (His Tag)



Catalog Number:PKSH033421

Note: Centrifuge before opening to ensure complete recovery of vial contents.

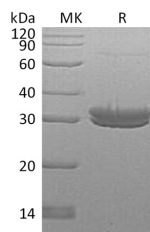
Description

Synonyms	Kallikrein-7;hK7;Serine Protease 6;Stratum Corneum Chymotryptic Enzyme;hSCCE;KLK7;PRSS6;SCCE
Species	Human
Expression Host	HEK293 Cells
Sequence	Glu23-His252
Accession	AAH32005
Calculated Molecular Weight	26.2 kDa
Observed molecular weight	30 kDa
Tag	C-His

Properties

Purity	> 95 % as determined by reducing SDS-PAGE.
Endotoxin	< 1.0 EU per μg of the protein as determined by the LAL method.
Storage	Store at -20°C , stable for 6 months. Please minimize freeze-thaw cycles.
Shipping	This product is provided as liquid. It is shipped at frozen temperature with blue ice/gel packs. Upon receipt, store it immediately at -20°C .
Formulation	Supplied as a 0.2 μm filtered solution of 20mM HEPES, 150mM NaCl, pH 7.5.
Reconstitution	Not Applicable

Data



> 95 % as determined by reducing SDS-PAGE.

Background

Human Kallikrein 7 is a member of the tissue kallikrein family of extracellular serine proteases that is made up of 15 members. It is predominantly expressed in the skin. A major physiological function of Kallikrein 7 is to regulate the desquamation process (the shedding of corneocytes from the outer layer of the epidermis) through proteolysis of the intercellular adhesive structures between corneocytes. Dysregulation of Kallikrein 7 has been linked to several inflammatory skin diseases including atopic dermatitis, psoriasis, and Netherton syndrome. Studies have shown that Kallikrein 5 is a potential physiological activator for Kallikrein 7. The proform of Kallikrein 7 can be activated by thermolysin.

For Research Use Only

A Reliable Research Partner in Life Science and Medicine

Toll-free: 1-888-852-8623

Web: www.elabscience.com

Tel: 1-832-243-6086

Email: techsupport@elabscience.com

Fax: 1-832-243-6017