

Recombinant Human CD23 Protein (His Tag)

Catalog No. PKSH033432

Note: Centrifuge before opening to ensure complete recovery of vial contents.

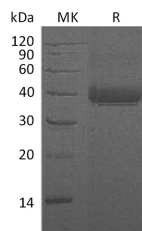
Description

Synonyms	Low affinity immunoglobulin epsilon Fc receptor;BLAST-2;C-type lectin domain family 4 member J;Fc-epsilon-RII;Immunoglobulin E-binding factor;Lymphocyte IgE receptor;CD23;FCER2;CD23A;CLEC4J;FCE2;IGEBF
Species	Human
Expression Host	HEK293 Cells
Sequence	Asp48-Ser321
Accession	P06734
Calculated Molecular Weight	32.1 kDa
Observed molecular weight	35-40 kDa
Tag	N-His
Bioactivity	Not validated for activity

Properties

Purity	> 95 % as determined by reducing SDS-PAGE.
Endotoxin	< 1.0 EU per µg of the protein as determined by the LAL method.
Storage	Generally, lyophilized proteins are stable for up to 12 months when stored at -20 to -80°C. Reconstituted protein solution can be stored at 4-8°C for 2-7 days. Aliquots of reconstituted samples are stable at < -20°C for 3 months.
Shipping	This product is provided as lyophilized powder which is shipped with ice packs.
Formulation	Lyophilized from a 0.2 µm filtered solution of PBS, pH 7.4. Normally 5 % - 8 % trehalose, mannitol and 0.01% Tween80 are added as protectants before lyophilization. Please refer to the specific buffer information in the printed manual.
Reconstitution	Please refer to the printed manual for detailed information.

Data



> 95 % as determined by reducing SDS-PAGE.

Background

For Research Use Only

Low affinity immunoglobulin epsilon Fc receptor(CD23) is a secreted and single-pass type II membrane protein which is also exists as a soluble excreted form. There are two forms of CD23: CD23a and CD23b. CD23a is present on follicular B cells, whereas CD23b requires IL-4 to be expressed on T-cells, monocytes, Langerhans cells, eosinophils, and macrophages. Unlike many of the antibody receptors, CD23/FCER2 is a C-type lectin. It is found on mature B cells, activated macrophages, eosinophils, follicular dendritic cells, and platelets. In flow cytometry, CD23/FCER2 is helpful in the differentiation of chronic lymphocytic leukemia (CD23-positive) from mantle cell leukemia (CD23-negative). CD23/FCER2 can also be demonstrated in germinal centre B-cells using immunohistochemistry, but it is not present in the resting cells of the surrounding mantle zone. CD23/FCER2 has essential roles in the regulation of IgE production and in the differentiation of B-cells (it is a B-cell-specific antigen).