

# Recombinant Human Factor D Protein (His Tag)

Catalog Number:PKSH033442



**Note:** Centrifuge before opening to ensure complete recovery of vial contents.

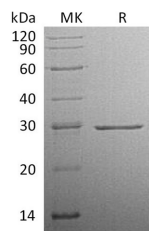
## Description

<b>Synonyms</b>	Complement factor D;CFD;Adipsin;C3 convertase activator;Properdin factor D;DF;PFD;ADIPSIN;ADN;DF;FACTOR D
<b>Species</b>	Human
<b>Expression Host</b>	HEK293 Cells
<b>Sequence</b>	Ile26-Ala253
<b>Accession</b>	P00746
<b>Calculated Molecular Weight</b>	25.8 kDa
<b>Observed molecular weight</b>	28 kDa
<b>Tag</b>	C-His

## Properties

<b>Purity</b>	> 95 % as determined by reducing SDS-PAGE.
<b>Endotoxin</b>	< 1.0 EU per µg of the protein as determined by the LAL method.
<b>Storage</b>	Store at < -20°C, stable for 6 months. Please minimize freeze-thaw cycles.
<b>Shipping</b>	This product is provided as liquid. It is shipped at frozen temperature with blue ice/gel packs. Upon receipt, store it immediately at < - 20°C.
<b>Formulation</b>	Supplied as a 0.2 µm filtered solution of 20mM Tris-HCl, 500mM NaCl, 2mM CaCl <sub>2</sub> , 5% Trehalose, 50% Glycerol, pH 8.5.
<b>Reconstitution</b>	Not Applicable

## Data



> 95 % as determined by reducing SDS-PAGE.

## Background

Complement factor D; also known as adipsin; is a member of the chymotrypsin family of serine proteases; which plays an essential role in host defense as the rate-limiting enzyme in the alternative pathway of complement activation. Complement factor D activates a convertase (C3bBb) responsible for cleavage of the complement protein C3; which leads to the activation of terminal complement component C5-9 to form the membrane attack complex on microbial or cellular surfaces. It also functions in the regulation of systemic energy balance and physiologic and pathologic processes; including immunity and inflammation.

## For Research Use Only

A Reliable Research Partner in Life Science and Medicine

Toll-free: 1-888-852-8623

Web: [www.elabscience.com](http://www.elabscience.com)

Tel: 1-832-243-6086

Email: [techsupport@elabscience.com](mailto:techsupport@elabscience.com)

Fax: 1-832-243-6017