

Recombinant Human Cathepsin Z Protein (His Tag)

Catalog Number:PKSH033443



Note: Centrifuge before opening to ensure complete recovery of vial contents.

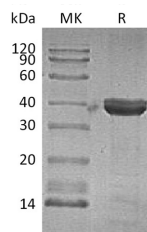
Description

Synonyms	Cathepsin Z;Cathepsin P;Cathepsin X;CTSZ
Species	Human
Expression Host	HEK293 Cells
Sequence	Gly24-Val303
Accession	Q9UBR2
Calculated Molecular Weight	32.5 kDa
Observed molecular weight	37-40 kDa
Tag	C-His

Properties

Purity	> 95 % as determined by reducing SDS-PAGE.
Endotoxin	< 1.0 EU per µg of the protein as determined by the LAL method.
Storage	Store at < -20°C, stable for 6 months. Please minimize freeze-thaw cycles.
Shipping	This product is provided as liquid. It is shipped at frozen temperature with blue ice/gel packs. Upon receipt, store it immediately at < - 20°C.
Formulation	Supplied as a 0.2 µm filtered solution of 4mM HCl.
Reconstitution	Not Applicable

Data



> 95 % as determined by reducing SDS-PAGE.

Background

Cathepsin Z is a lysosomal cysteine proteinase and belongs to the peptidase C1 family. Human Cathepsin Z contains a signal sequence; a propeptide and a mature chain. It exhibits both carboxy-monopeptidase and carboxy-dipeptidase activities. In contrast to cathepsin B; it does not act as an endopeptidase. Cathepsin Z is restricted to the cells of the immune system; predominantly monocytes; macrophages and dendritic cells. It is expressed ubiquitously in cancer cell lines and primary tumors. Like other members of this family; Cathepsin Z may be involved in tumorigenesis.

For Research Use Only

A Reliable Research Partner in Life Science and Medicine

Toll-free: 1-888-852-8623

Web: www.elabscience.com

Tel: 1-832-243-6086

Email: techsupport@elabscience.com

Fax: 1-832-243-6017