

Recombinant Mouse Carboxypeptidase M/CPM Protein (His Tag)



Catalog Number:PKSM041195

Note: Centrifuge before opening to ensure complete recovery of vial contents.

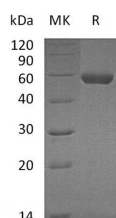
Description

Synonyms	Carboxypeptidase M;CPM
Species	Mouse
Expression Host	HEK293 Cells
Sequence	Leu18-Ser423
Accession	Q80V42
Calculated Molecular Weight	47.5 kDa
Observed molecular weight	56 kDa
Tag	C-His

Properties

Purity	> 95 % as determined by reducing SDS-PAGE.
Endotoxin	< 1.0 EU per µg of the protein as determined by the LAL method.
Storage	Generally, lyophilized proteins are stable for up to 12 months when stored at -20 to -80°C. Reconstituted protein solution can be stored at 4-8°C for 2-7 days. Aliquots of reconstituted samples are stable at < -20°C for 3 months.
Shipping	This product is provided as lyophilized powder which is shipped with ice packs.
Formulation	Lyophilized from a 0.2 µm filtered solution of PBS, pH 7.4. Normally 5 % - 8 % trehalose, mannitol and 0.01% Tween80 are added as protectants before lyophilization. Please refer to the specific buffer information in the printed manual.
Reconstitution	Please refer to the printed manual for detailed information.

Data



> 95 % as determined by reducing SDS-PAGE.

Background

Carboxypeptidase M (CPM) belongs to the peptidase M14 family, and exists in cell membrane. The protein binds 1 zinc ion per subunit, and cleavage of C-terminal arginine or lysine residues from polypeptides. CPM specifically removes C-terminal basic residues (Arg or Lys) from peptides and proteins. It is believed to play important roles in the control of peptide hormone and growth factor activity at the cell surface, and in the membrane-localized degradation of extracellular proteins.

For Research Use Only

A Reliable Research Partner in Life Science and Medicine

Toll-free: 1-888-852-8623

Web: www.elabscience.com

Tel: 1-832-243-6086

Email: techsupport@elabscience.com

Fax: 1-832-243-6017