

Recombinant Mouse Cathepsin E/CTSE Protein (aa 60-397, His Tag)

DIA • AN[®]
by Elabscience

Catalog Number:PKSM041211

Note: Centrifuge before opening to ensure complete recovery of vial contents.

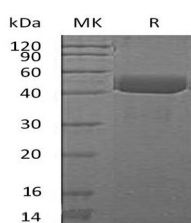
Description

Synonyms	Cathepsin E;ctse;CE
Species	Mouse
Expression Host	HEK293 Cells
Sequence	Ser60-Pro397
Accession	P70269
Calculated Molecular Weight	37.0 kDa
Observed molecular weight	42 kDa
Tag	C-His

Properties

Purity	> 95 % as determined by reducing SDS-PAGE.
Endotoxin	< 1.0 EU per µg of the protein as determined by the LAL method.
Storage	Generally, lyophilized proteins are stable for up to 12 months when stored at -20 to -80°C. Reconstituted protein solution can be stored at 4-8°C for 2-7 days. Aliquots of reconstituted samples are stable at < -20°C for 3 months.
Shipping	This product is provided as lyophilized powder which is shipped with ice packs.
Formulation	Lyophilized from a 0.2 µm filtered solution of PBS, pH 7.4. Normally 5 % - 8 % trehalose, mannitol and 0.01% Tween80 are added as protectants before lyophilization. Please refer to the specific buffer information in the printed manual.
Reconstitution	Please refer to the printed manual for detailed information.

Data



> 95 % as determined by reducing SDS-PAGE.

Background

Cathepsin E is encoded by the ctse gene, exists in the homodimer forms, belongs to the peptidase A1 family. Cathepsin E is highly expressed in the stomach, clara cells and alveolar macrophages of lung, brain microglia, spleen and activated B-lymphocytes. Cathepsin E may involve in the processing of antigenic peptides during MHC class II-mediated antigen presentation, play a role in activation-induced lymphocyte depletion in the thymus, and in neuronal degeneration and glial cell activation in the brain.

For Research Use Only

A Reliable Research Partner in Life Science and Medicine

Toll-free: 1-888-852-8623

Web: www.elabscience.com

Tel: 1-832-243-6086

Email: techsupport@elabscience.com

Fax: 1-832-243-6017