

Recombinant Mouse CD147/Basigin Protein (aa 22-325, His Tag)



Catalog Number:PKSM041223

Note: Centrifuge before opening to ensure complete recovery of vial contents.

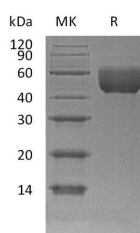
Description

Synonyms	Basigin;Basic immunoglobulin superfamily;HT7 antigen;Membrane glycoprotein gp42;CD147;Bsg;AI115436;AI325119;EMMPRIN;HT-7
Species	Mouse
Expression Host	HEK293 Cells
Sequence	Ala22-Arg325
Accession	P18572
Calculated Molecular Weight	34.1 kDa
Observed molecular weight	45-60 kDa
Tag	C-His

Properties

Purity	> 90 % as determined by reducing SDS-PAGE.
Endotoxin	< 1.0 EU per µg of the protein as determined by the LAL method.
Storage	Generally, lyophilized proteins are stable for up to 12 months when stored at -20 to -80°C. Reconstituted protein solution can be stored at 4-8°C for 2-7 days. Aliquots of reconstituted samples are stable at < -20°C for 3 months.
Shipping	This product is provided as lyophilized powder which is shipped with ice packs.
Formulation	Lyophilized from a 0.2 µm filtered solution of PBS, pH 7.4. Normally 5 % - 8 % trehalose, mannitol and 0.01 % Tween80 are added as protectants before lyophilization. Please refer to the specific buffer information in the printed manual.
Reconstitution	Please refer to the printed manual for detailed information.

Data



> 90 % as determined by reducing SDS-PAGE.

Background

Basigin/CD147 is a member of the immunoglobulin superfamily with homology to both the immunoglobulin V domain and MHC class II antigen beta-chain. This protein play important roles in variety of events including spermatogenesis, embryo implantation, neural network formation. CD147 induces the production and release of matrix metalloproteinases (MMP) in the surrounding mesenchymal cells and tumor cells, and thereby promotes invasion, metastasis, growth and survival of malignant cells. Furthermore, CD147 also serves as a receptor for extracellular cyclophilinthe and its association with integrins might be important in signal transduction. CD147 displays increased expression in many cancers, and it has been previously demonstrated to participate in cancer metastasis and progression.

For Research Use Only

A Reliable Research Partner in Life Science and Medicine

Toll-free: 1-888-852-8623

Web: www.elabscience.com

Tel: 1-832-243-6086

Email: techsupport@elabscience.com

Fax: 1-832-243-6017