

Recombinant Mouse CNDP2/CPGL/PEPA Protein (His Tag)

Catalog Number: PKSM041231

Note: Centrifuge before opening to ensure complete recovery of vial contents.

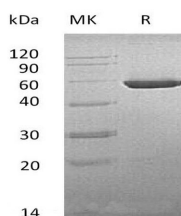
Description

Synonyms	CNDP2;CNDP dipeptidase 2;Cytosolic non-specific dipeptidase;Glutamate carboxypeptidase-like protein 1;Dip-2;Pep-1;Pep1
Species	Mouse
Expression Host	HEK293 Cells
Sequence	Met1-Asn475
Accession	Q9D1A2
Calculated Molecular Weight	53.8 kDa
Observed molecular weight	56-60 kDa
Tag	C-His

Properties

Purity	> 95 % as determined by reducing SDS-PAGE.
Endotoxin	< 1.0 EU per µg of the protein as determined by the LAL method.
Storage	Store at < -20°C, stable for 6 months. Please minimize freeze-thaw cycles.
Shipping	This product is provided as liquid. It is shipped at frozen temperature with blue ice/gel packs. Upon receipt, store it immediately at < - 20°C.
Formulation	Supplied as a 0.2 µm filtered solution of 20mM Tris-HCl, 150mM NaCl, 10% Glycerol, pH 8.0.
Reconstitution	Not Applicable

Data



> 95 % as determined by reducing SDS-PAGE.

Background

Mouse cytosolic non-specific dipeptidase(CNDP2) is a cytoplasm protein which belongs to the peptidase M20A family. CNDP2 has 2 Isoform: Isoform 1 is ubiquitously expressed with higher levels in kidney and liver (at protein level). Isoform 2 is expressed in fetal tissues, it is only expressed in adult liver and placental tissues. CNDP2 hydrolyzes a variety of dipeptides including L-carnosine and has a strong preference for Cys-Gly. It is a cytosolic enzyme that can hydrolyze carnosine to yield l-histidine and beta-alanine. CNDP2 is highly expressed in the histaminergic neurons in the tuberomammillary nucleus, implying that it may supply histidine to histaminergic neurons for histamine synthesis. It may play a role as tumor suppressor in hepatocellular carcinoma (HCC) cells.

For Research Use Only

A Reliable Research Partner in Life Science and Medicine

Toll-free: 1-888-852-8623

Web: www.elabscience.com

Tel: 1-832-243-6086

Email: techsupport@elabscience.com

Fax: 1-832-243-6017