

# Recombinant Mouse Serpin F1/PEDF Protein

Catalog Number:PKSM041232



**Note:** Centrifuge before opening to ensure complete recovery of vial contents.

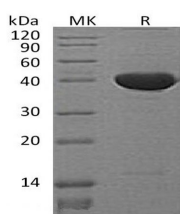
## Description

<b>Synonyms</b>	Pigment epithelium-derived factor;Pedf;Sdf3;Caspin;Serpin F1;Stromal cell-derived factor 3.
<b>Species</b>	Mouse
<b>Expression Host</b>	E.coli
<b>Sequence</b>	Asp43-Thr417
<b>Accession</b>	P97298
<b>Calculated Molecular Weight</b>	42.0 kDa
<b>Observed molecular weight</b>	40 kDa
<b>Tag</b>	None

## Properties

<b>Purity</b>	> 95 % as determined by reducing SDS-PAGE.
<b>Endotoxin</b>	< 1.0 EU per µg of the protein as determined by the LAL method.
<b>Storage</b>	Store at < -20°C, stable for 6 months. Please minimize freeze-thaw cycles.
<b>Shipping</b>	This product is provided as liquid. It is shipped at frozen temperature with blue ice/gel packs. Upon receipt, store it immediately at < - 20°C.
<b>Formulation</b>	Supplied as a 0.2 µm filtered solution of PBS, pH7.4.
<b>Reconstitution</b>	Not Applicable

## Data



> 95 % as determined by reducing SDS-PAGE.

## Background

Serpin F1 is secreted Neurotrophic protein and belongs to the serpin family. Serpin F1 Highly expressed in the liver, gastric glandular mucosa and renal tubules. It is also expressed in the brain, heart, lung retina and testes. It induces extensive neuronal differentiation in retinoblastoma cells. It is potent inhibitor of angiogenesis. As it does not undergo the S (stressed) to R (relaxed) conformational transition characteristic of active serpins, exhibits no serine protease inhibitory activity.

## For Research Use Only

A Reliable Research Partner in Life Science and Medicine

Toll-free: 1-888-852-8623

Web: [www.elabscience.com](http://www.elabscience.com)

Tel: 1-832-243-6086

Email: [techsupport@elabscience.com](mailto:techsupport@elabscience.com)

Fax: 1-832-243-6017