

Recombinant Mouse Cathepsin D/CTSD Protein (His Tag)

Catalog No. PKSM041238

Note: Centrifuge before opening to ensure complete recovery of vial contents.

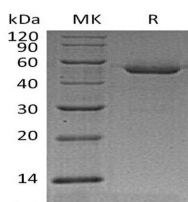
Description

Synonyms	Cathepsin D;CTSD;CPSD
Species	Mouse
Expression Host	HEK293 Cells
Sequence	Ile21-Leu410
Accession	NP_034113.1
Calculated Molecular Weight	43.9 kDa
Observed molecular weight	56 kDa
Tag	C-His
Bioactivity	Not validated for activity

Properties

Purity	> 95 % as determined by reducing SDS-PAGE.
Endotoxin	< 1.0 EU per µg of the protein as determined by the LAL method.
Storage	Generally, lyophilized proteins are stable for up to 12 months when stored at -20 to -80°C. Reconstituted protein solution can be stored at 4-8°C for 2-7 days. Aliquots of reconstituted samples are stable at < -20°C for 3 months.
Shipping	This product is provided as lyophilized powder which is shipped with ice packs.
Formulation	Lyophilized from a 0.2 µm filtered solution of 20mM MES,150mM NaCl,pH5.5. Normally 5% - 8% trehalose, mannitol and 0.01% Tween 80 are added as protectants before lyophilization. Please refer to the specific buffer information in the printed manual.
Reconstitution	Please refer to the printed manual for detailed information.

Data



> 95 % as determined by reducing SDS-PAGE.

Background

CTSD localizes to the lysosome and consists of a light chain and a heavy chain. CTSD is expressed in epithelial cells as well as in macrophages. CTSD is a lysosomal aspartyl protease that depends critically on protonation of its active site Asp

For Research Use Only

residue and gets activated at pH 5 in endosome of hepatocytes. It has been suggested to facilitate cancer cell migration and invasion by digesting the basement membrane, extracellular matrix and connective tissue. In addition, CTSD has been used as a breast cancer tumor marker.