

## APC Anti-Mouse CD22 Antibody[Cy34.1]

|                    |  |                     |       |
|--------------------|--|---------------------|-------|
| <b>Catalog No.</b> | E-AB-F1021E                                | <b>Reactivity</b>   | Mouse |
| <b>Storage</b>     | Store at 2~8°C, Avoid freeze / thaw cycles | <b>Applications</b> | FCM   |

**Important Note:** Centrifuge before opening to ensure complete recovery of vial contents.

### Antigen Information

|                        |   |
|------------------------|---|
| <b>Alternate Names</b> | B-cell receptor CD22,Cd22,B-lymphocyte cell adhesion molecule,BL-CAM,Sialic acid-binding Ig-like lectin 2,Siglec-2,T-cell surface antigen Leu-14,CD22,Lyb-8, Siglec2  |
| <b>Uniprot ID</b>      | P35329  |
| <b>Background</b>      | The Cy34.1 monoclonal antibody specifically binds to the B-lymphocyte differentiation antigen CD22 on strains having the Lyb-8.2 alloantigen (e.g., A, BALB/c, CBA, C3H/He, C57BL, C57L, C58, SJL, SWR, but not AKR, DBA/1, DBA/2, NZB, PL). CD22 is expressed at high levels on mature peripheral B lymphocytes (follicular and marginal zone), B-1 cells (CD5+ B cells), and plasma cells. It is a member of the Ig gene superfamily and associates with the B-cell antigen receptor. Its sialic acid- binding immunoglobulin-like lectin (siglec) extracellular region mediates B-cell adhesion to ligands on endothelial cells in the bone marrow. Its intracellular domain is phosphorylated after cross-linking of antigen receptor or MHC class II antigen. It is involved in negative regulation of B-cell activation and protection from autoimmunity. B-cell proliferative responses to LPS or anti-mouse Ig $\mu$ chain are augmented in the presence of Cy34.1 mAb. |

### Product Details

|                                |  |
|--------------------------------|--|
| <b>Form</b>                    | Liquid   |
| <b>Size</b>                    | 50Tests/100Tests/100Tests×2  |
| <b>Clone No.</b>               | Cy34.1   |
| <b>Host</b>                    | Mouse  |
| <b>Isotype</b>                 | Mouse IgG1, $\kappa$   |
| <b>Reactivity</b>              | Mouse  |
| <b>Application</b>             | FCM  |
| <b>Isotype Control</b>         | <a href="#">APC Mouse IgG1, <math>\kappa</math> Isotype Control[MOPC-21] [Product E-AB-F09792E]</a>  |
| <b>Storage Buffer</b>          | Phosphate buffered solution, pH 7.2, containing 0.09% stabilizer and 1% protein protectant.  |
| <b>Shipping</b>                | Biological ice pack at 4 °C  |
| <b>Stability &amp; Storage</b> | Keep as concentrated solution.<br>Store at 2~8°C and protected from prolonged exposure to light.Do not freeze.<br>This product is guaranteed up to one year from purchase. |

### For Research Use Only

## Fluorophore

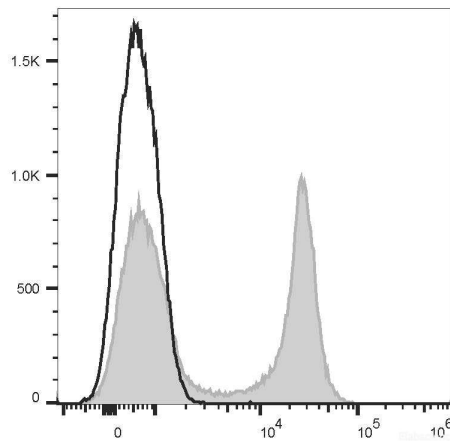
**Conjugation:** APC

APC is designed to be excited by the Red (627-640 nm) laser and detected using an optical filter centered near 660 nm (e.g., a 660/20 nm bandpass filter).

## Recommended usage

Each lot of this antibody is quality control tested by flow cytometric analysis. **The amount of the reagent is suggested to be used 5 µL of antibody per test (million cells in 100 µL staining volume or per 100 µL of whole blood).** Please check your vial before the experiment. Since applications vary, the appropriate dilutions must be determined for individual use.

## Product data



C57BL/6 murine splenocytes are stained with APC Anti-Mouse CD22 Antibody[Cy34.1] (filled gray histogram) or APC Mouse IgG1,  $\kappa$  Isotype Control (empty black histogram).

## Related Information

1. Sample Preparation for Flow Cytometry <https://www.elabscience.com/List-detail-5594.html>
2. Staining Cell Surface Targets for Flow Cytometry <https://www.elabscience.com/List-detail-5568.html>
3. Flow Cytometry Troubleshooting Tips <https://www.elabscience.com/List-detail-5593.html>
4. How to select the appropriate detection channel through the spectrogram? <https://www.elabscience.com/List-detail-459742.html>

## For Research Use Only