

## APC Anti-Human CD11a Antibody[TS1/22.1.1.13]

|                    |  |                     |       |
|--------------------|--|---------------------|-------|
| <b>Catalog No.</b> | E-AB-F1055E                                | <b>Reactivity</b>   | Human |
| <b>Storage</b>     | Store at 2~8°C, Avoid freeze / thaw cycles | <b>Applications</b> | FCM   |

**Important Note:** Centrifuge before opening to ensure complete recovery of vial contents.

### Antigen Information

|                        |   |
|------------------------|---|
| <b>Alternate Names</b> | Integrin alpha-L, Itgal, CD11 antigen-like family member A, LFA-1A, Lymphocyte antigen 15, Ly-15, CD11a   |
| <b>Uniprot ID</b>      | P20701  |
| <b>Background</b>      | CD11a is a 170-180 kD type I transmembrane glycoprotein also known as LFA-1 $\alpha$ chain and integrin $\alpha$ L subunit. CD11a non-covalently associates with integrin $\beta$ 2 (CD18) to form LFA-1. It is expressed on all leukocytes, including B and T lymphocytes, monocytes, macrophages, neutrophils, basophils and eosinophils. It is absent on non-hematopoietic tissues and platelets. CD11a plays a central role in leukocyte cell-cell interactions and is important in lymphocyte costimulation. CD11a/CD18 binds to ICAM-1 (CD54), ICAM-2 (CD102), and ICAM-3 (CD50). |

### Product Details

|                                |   |
|--------------------------------|---|
| <b>Form</b>                    | Liquid  |
| <b>Size</b>                    | 20Tests/100Tests/100Tests $\times$ 2  |
| <b>Clone No.</b>               | TS1/22.1.1.13   |
| <b>Host</b>                    | Mouse   |
| <b>Isotype</b>                 | Mouse IgG1, $\kappa$  |
| <b>Reactivity</b>              | Human   |
| <b>Application</b>             | FCM   |
| <b>Isotype Control</b>         | <a href="#">APC Mouse IgG1, <math>\kappa</math> Isotype Control[MOPC-21] [Product E-AB-F09792E]</a>   |
| <b>Storage Buffer</b>          | Phosphate buffered solution, pH 7.2, containing 0.09% stabilizer and 1% protein protectant.   |
| <b>Shipping</b>                | Biological ice pack at 4 °C   |
| <b>Stability &amp; Storage</b> | Keep as concentrated solution.<br>Store at 2~8°C and protected from prolonged exposure to light. Do not freeze.<br>This product is guaranteed up to one year from purchase. |

## Fluorophore

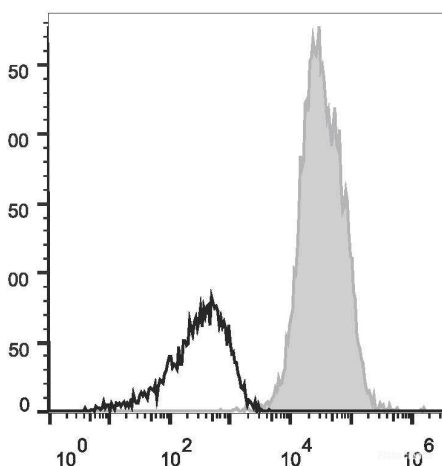
### Conjugation: APC

APC is designed to be excited by the Red (627-640 nm) laser and detected using an optical filter centered near 660 nm (e.g., a 660/20 nm bandpass filter).

## Recommended usage

Each lot of this antibody is quality control tested by flow cytometric analysis. **The amount of the reagent is suggested to be used 5  $\mu$ L of antibody per test (million cells in 100  $\mu$ L staining volume or per 100  $\mu$ L of whole blood).** Please check your vial before the experiment. Since applications vary, the appropriate dilutions must be determined for individual use.

## Product data



Human peripheral blood lymphocytes are stained with APC Anti-Human CD11a Antibody (filled gray histogram).  
Unstained lymphocytes (empty black histogram) are used as control.

## Related Information

1. Sample Preparation for Flow Cytometry <https://www.elabscience.com/List-detail-5594.html>
2. Staining Cell Surface Targets for Flow Cytometry <https://www.elabscience.com/List-detail-5568.html>
3. Flow Cytometry Troubleshooting Tips <https://www.elabscience.com/List-detail-5593.html>
4. How to select the appropriate detection channel through the spectrogram? <https://www.elabscience.com/List-detail-459742.html>