

PE Anti-Human CD32 Antibody[IV-3]

Catalog No.	E-AB-F1075D	Reactivity	Human
Storage	Store at 2~8°C, Avoid freeze / thaw cycles	Applications	FCM

Important Note: Centrifuge before opening to ensure complete recovery of vial contents.

Antigen Information

Alternate Names	Low affinity immunoglobulin gamma Fc region receptor II-b,FCGR2B,IgG Fc receptor II-b,CDw32,Fc-gamma RII-b,Fc-gamma-RIIb,FcRII-b,CD32,FCG2, IGFR2
Uniprot ID	P31994
Background	CD32 is a 40 kD polymorphic transmembrane glycoprotein also known as FcγRII and FCR2. It is an immunoglobulin superfamily member expressed on monocytes/macrophages, granulocytes, platelets and B cells. There are at least 6 isoforms of CD32 resulting from alternative mRNA splicing. CD32 mediates phagocytosis and oxidative burst in granulocytes, as well as platelet aggregation and immunomodulation. The extracellular domain of CD32 binds to polymeric and aggregated IgG and immune complexes, while the intracellular domain has been reported to associate with SHP-1 (B1 isoform).

Product Details

Form	Liquid
Size	20Tests/100Tests/100Tests×2
Clone No.	IV-3
Host	Mouse
Isotype	Mouse IgG2b, κ
Reactivity	Human
Application	FCM
Isotype Control	PE Mouse IgG2b, κ Isotype Control[MPC-11] [Product E-AB-F09812D]
Storage Buffer	Phosphate buffered solution, pH 7.2, containing 0.09% stabilizer and 1% protein protectant.
Shipping	Biological ice pack at 4 °C
Stability & Storage	Keep as concentrated solution. Store at 2~8°C and protected from prolonged exposure to light.Do not freeze. This product is guaranteed up to one year from purchase.

For Research Use Only

Fluorophore

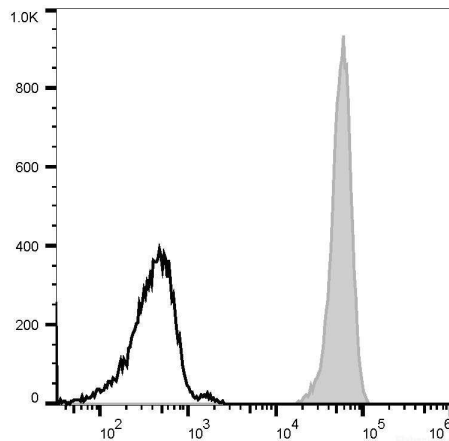
Conjugation: PE

PE is designed to be excited by the Blue (488 nm), Green (532 nm) and Yellow-Green (561 nm) lasers and detected using an optical filter centered near 575 nm (e.g., a 585/42 nm bandpass filter).

Recommended usage

Each lot of this antibody is quality control tested by flow cytometric analysis. **The amount of the reagent is suggested to be used 5 μ L of antibody per test (million cells in 100 μ L staining volume or per 100 μ L of whole blood).** Please check your vial before the experiment. Since applications vary, the appropriate dilutions must be determined for individual use.

Product data



Human peripheral blood granulocytes are stained with PE Anti-Human CD32 Antibody[IV-3] (filled gray histogram) or PE Mouse IgG2b, κ Isotype Control (empty black histogram).

Related Information

1. Sample Preparation for Flow Cytometry <https://www.elabscience.com/List-detail-5594.html>
2. Staining Cell Surface Targets for Flow Cytometry <https://www.elabscience.com/List-detail-5568.html>
3. Flow Cytometry Troubleshooting Tips <https://www.elabscience.com/List-detail-5593.html>
4. How to select the appropriate detection channel through the spectrogram? <https://www.elabscience.com/List-detail-459742.html>

For Research Use Only