

PE Anti-Mouse CD106 Antibody[M/K-2.7]

Catalog No.	E-AB-F1091D	Reactivity	Mouse
Storage	Store at 2~8°C, Avoid freeze / thaw cycles	Applications	FCM

Important Note: Centrifuge before opening to ensure complete recovery of vial contents.

Antigen Information

Alternate Names	Vascular cell adhesion protein 1,Vcam1,V-CAM 1,VCAM-1,CD106
Uniprot ID	P29533
Background	CD106 is a 110 kD glycosylphosphatidylinositol (GPI)-linked transmembrane protein, also known as VCAM-1 and INCAM-110. It is constitutively expressed on bone marrow stromal cells, myeloid progenitors, splenic dendritic cells, activated endothelial cells, as well as some lymphocytes. CD106 expression can be upregulated on endothelial cells by inflammatory cytokines. CD106 is involved in adhesion and acts as a counter-receptor for VLA-4 ($\alpha 4/\beta 1$ integrin) and LPAM-1 ($\alpha 4/\beta 7$ integrin).

Product Details

Form	Liquid
Size	50Tests/100Tests/100Tests×2
Clone No.	M/K-2.7
Host	Rat
Isotype	Rat IgG1, κ
Reactivity	Mouse
Application	FCM
Isotype Control	PE Rat IgG1, κ Isotype Control[HRPN] [Product E-AB-F09822D]
Storage Buffer	Phosphate buffered solution, pH 7.2, containing 0.09% stabilizer and 1% protein protectant.
Shipping	Biological ice pack at 4 °C
Stability & Storage	Keep as concentrated solution. Store at 2~8°C and protected from prolonged exposure to light.Do not freeze. This product is guaranteed up to one year from purchase.

For Research Use Only

Fluorophore

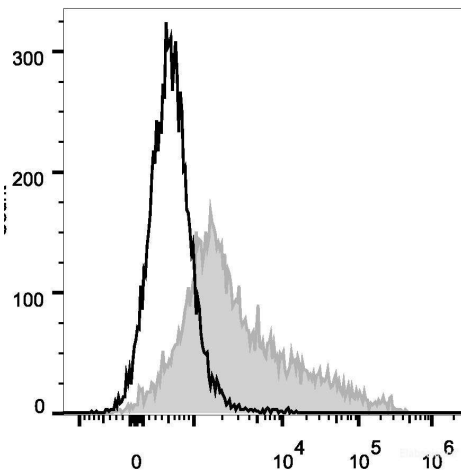
Conjugation: PE

PE is designed to be excited by the Blue (488 nm), Green (532 nm) and Yellow-Green (561 nm) lasers and detected using an optical filter centered near 575 nm (e.g., a 585/42 nm bandpass filter).

Recommended usage

Each lot of this antibody is quality control tested by flow cytometric analysis. **The amount of the reagent is suggested to be used 5 μ L of antibody per test (million cells in 100 μ L staining volume or per 100 μ L of whole blood).** Please check your vial before the experiment. Since applications vary, the appropriate dilutions must be determined for individual use.

Product data



C57BL/6 murine bone marrow cells are stained with PE Anti-Mouse CD106 Antibody (filled gray histogram).
Unstained bone marrow cells (empty black histogram) are used as control.

Related Information

1. Sample Preparation for Flow Cytometry <https://www.elabscience.com/List-detail-5594.html>
2. Staining Cell Surface Targets for Flow Cytometry <https://www.elabscience.com/List-detail-5568.html>
3. Flow Cytometry Troubleshooting Tips <https://www.elabscience.com/List-detail-5593.html>
4. How to select the appropriate detection channel through the spectrogram? <https://www.elabscience.com/List-detail-459742.html>