

PE Anti-Mouse CD119 Antibody[GR-20]

Catalog No.	E-AB-F1115D	Reactivity	Mouse
Storage	Store at 2~8°C, Avoid freeze / thaw cycles	Applications	FCM

Important Note: Centrifuge before opening to ensure complete recovery of vial contents.

Antigen Information

Alternate Names	Interferon gamma receptor 1,Ifngr1,IFN-gamma-R1,IFN-gamma-R-alpha,CD119
Uniprot ID	P15261
Background	CDw119 is a 90 kD immunoglobulin superfamily member, also known as IFN- γ R α chain. It is a class II cytokine receptor family member that serves as a IFN- γ -binding chain associated with the IFN- γ β chain also known as AF-1. In addition to ligand binding, CDw119 participates in ligand trafficking. CDw119 is expressed on T and B cells, NK cells, fibroblasts, endothelial, and epithelial cells. Binding of IFN- γ induces receptor dimerization, internalization, Jak1 and Jak2 protein kinase activation and, ultimately, STAT1 activation. IFN- γ initiates and regulates a variety of immune responses.

Product Details

Form	Liquid
Size	50Tests/100Tests/100Tests \times 2
Clone No.	GR-20
Host	Rat
Isotype	Rat IgG2a, κ
Reactivity	Mouse
Application	FCM
Isotype Control	PE Rat IgG2a, κ Isotype Control[2A3] [Product E-AB-F09832D]
Storage Buffer	Phosphate buffered solution, pH 7.2, containing 0.09% stabilizer and 1% protein protectant.
Shipping	Biological ice pack at 4 °C
Stability & Storage	Keep as concentrated solution. Store at 2~8°C and protected from prolonged exposure to light.Do not freeze. This product is guaranteed up to one year from purchase.

For Research Use Only

Fluorophore

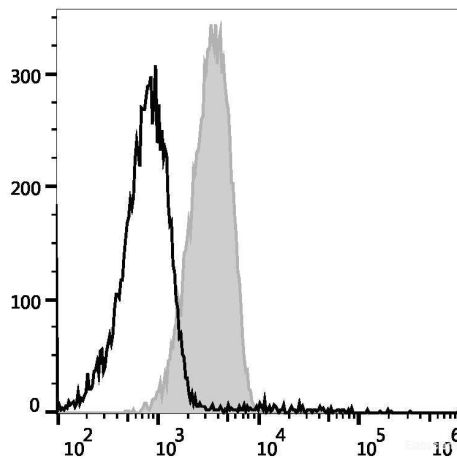
Conjugation: PE

PE is designed to be excited by the Blue (488 nm), Green (532 nm) and Yellow-Green (561 nm) lasers and detected using an optical filter centered near 575 nm (e.g., a 585/42 nm bandpass filter).

Recommended usage

Each lot of this antibody is quality control tested by flow cytometric analysis. **The amount of the reagent is suggested to be used 5 µL of antibody per test (million cells in 100 µL staining volume or per 100 µL of whole blood).** Please check your vial before the experiment. Since applications vary, the appropriate dilutions must be determined for individual use.

Product data



Raw264.7 cells are stained with PE Anti-Mouse CD119 Antibody (filled gray histogram) or PE Rat IgG2a, κ Isotype Control (empty black histogram).

Related Information

1. Sample Preparation for Flow Cytometry <https://www.elabscience.com/List-detail-5594.html>
2. Staining Cell Surface Targets for Flow Cytometry <https://www.elabscience.com/List-detail-5568.html>
3. Flow Cytometry Troubleshooting Tips <https://www.elabscience.com/List-detail-5593.html>
4. How to select the appropriate detection channel through the spectrogram? <https://www.elabscience.com/List-detail-459742.html>

For Research Use Only