

PerCP Anti-Mouse Ly-6G/Ly-6C (Gr-1) Antibody[RB6-8C5]

| | | | |
|--------------------|--|---------------------|-------|
| Catalog No. | E-AB-F1120F | Reactivity | Mouse |
| Storage | Store at 2~8°C, Avoid freeze / thaw cycles | Applications | FCM |

Important Note: Centrifuge before opening to ensure complete recovery of vial contents.

Antigen Information

| | |
|------------------------|--|
| Alternate Names | Gr-1,Gr1,Ly-6G/Ly-6C,Ly6G/Ly6C |
| Uniprot ID | P35461,P0CW03 |
| Background | Gr-1 is a 21-25 kD protein also known as Ly-6G/Ly-6C. This myeloid differentiation antigen is a glycosylphosphatidylinositol (GPI)-linked protein expressed on granulocytes and macrophages. In bone marrow, the expression levels of Gr-1 directly correlate with granulocyte differentiation and maturation; Gr-1 is also transiently expressed on bone marrow cells in the monocyte lineage. Immature Myeloid Gr-1+ cells play a role in the development of antitumor immunity. |

Product Details

| | |
|--------------------------------|--|
| Form | Liquid |
| Size | 50Tests/100Tests/100Tests×2 |
| Clone No. | RB6-8C5 |
| Host | Rat |
| Isotype | Rat IgG2b, κ |
| Reactivity | Mouse |
| Application | FCM |
| Isotype Control | PerCP Rat IgG2b, κ Isotype Control[LTF-2] [Product E-AB-F09842F] |
| Storage Buffer | Phosphate buffered solution, pH 7.2, containing 0.09% stabilizer and 1% protein protectant. |
| Shipping | Biological ice pack at 4 °C |
| Stability & Storage | Keep as concentrated solution. Store at 2~8°C and protected from prolonged exposure to light.Do not freeze. This product is guaranteed up to one year from purchase. |

For Research Use Only

Fluorophore

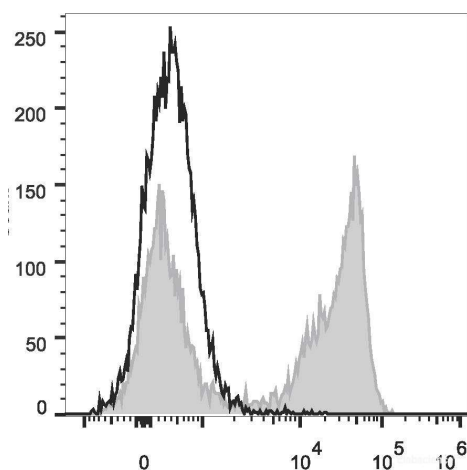
Conjugation: PerCP

PerCP is designed to be excited by the blue laser (488 nm) and detected using an optical filter centered near 675 nm (e.g., a 690/50 nm bandpass filter).

Recommended usage

Each lot of this antibody is quality control tested by flow cytometric analysis. **The amount of the reagent is suggested to be used 5 μ L of antibody per test (million cells in 100 μ L staining volume or per 100 μ L of whole blood).** Please check your vial before the experiment. Since applications vary, the appropriate dilutions must be determined for individual use.

Product data



C57BL/6 murine bone marrow cells are stained with PerCP Anti-Mouse Ly-6G/Ly-6C (Gr-1) Antibody (filled gray histogram). Unstained bone marrow cells (empty black histogram) are used as control.

Related Information

1. Sample Preparation for Flow Cytometry <https://www.elabscience.com/List-detail-5594.html>
2. Staining Cell Surface Targets for Flow Cytometry <https://www.elabscience.com/List-detail-5568.html>
3. Flow Cytometry Troubleshooting Tips <https://www.elabscience.com/List-detail-5593.html>
4. How to select the appropriate detection channel through the spectrogram? <https://www.elabscience.com/List-detail-459742.html>

For Research Use Only