

FITC Anti-Human CD10 Antibody[HI10a]

Catalog No.	E-AB-F1141C	Reactivity	Human
Storage	Store at 2~8°C, Avoid freeze / thaw cycles	Applications	FCM

Important Note: Centrifuge before opening to ensure complete recovery of vial contents.

Antigen Information

Alternate Names	Neprilysin, Atriopeptidase, CALLA, Enkephalinase, NEP, Neutral endopeptidase, Skin fibroblast elastase, SFE, CD10
Uniprot ID	P08473
Background	CD10 is a 100 kD neutral endopeptidase and a member of the metalloprotease family. It is a type II transmembrane protein also known as common acute lymphoblastic leukemia antigen (CALLA), enkephalinase, and neprilysin. CD10 is expressed on B cell precursors, T cell precursors, and neutrophils. CD10 is involved in B cell development and has been shown to bind opioid enkephalins, bradykinin, angiotensins I and II, and other biologically active peptides.

Product Details

Form	Liquid
Size	20Tests/100Tests/100Tests×2
Clone No.	HI10a
Host	Mouse
Isotype	Mouse IgG1, κ
Reactivity	Human
Application	FCM
Isotype Control	FITC Mouse IgG1, κ Isotype Control[MOPC-21] [Product E-AB-F09792C]
Storage Buffer	Phosphate buffered solution, pH 7.2, containing 0.09% stabilizer and 1% protein protectant.
Shipping	Biological ice pack at 4 °C
Stability & Storage	Keep as concentrated solution. Store at 2~8°C and protected from prolonged exposure to light. Do not freeze. This product is guaranteed up to one year from purchase.

For Research Use Only

Fluorophore

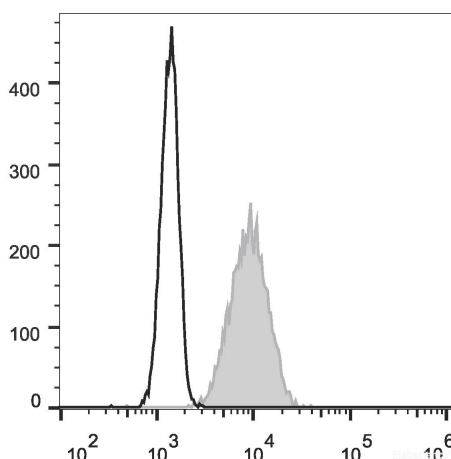
Conjugation: FITC

FITC is designed to be excited by the Blue laser (488 nm) and detected using an optical filter centered near 530 nm (e.g., a 525/40 nm bandpass filter).

Recommended usage

Each lot of this antibody is quality control tested by flow cytometric analysis. **The amount of the reagent is suggested to be used 5 μ L of antibody per test (million cells in 100 μ L staining volume or per 100 μ L of whole blood).** Please check your vial before the experiment. Since applications vary, the appropriate dilutions must be determined for individual use.

Product data



Human peripheral blood granulocytes are stained with FITC Anti-Human CD10 Antibody (filled gray histogram).
Unstained granulocytes (empty black histogram) are used as control.

Related Information

1. Sample Preparation for Flow Cytometry <https://www.elabscience.com/List-detail-5594.html>
2. Staining Cell Surface Targets for Flow Cytometry <https://www.elabscience.com/List-detail-5568.html>
3. Flow Cytometry Troubleshooting Tips <https://www.elabscience.com/List-detail-5593.html>
4. How to select the appropriate detection channel through the spectrogram? <https://www.elabscience.com/List-detail-459742.html>