

## APC Anti-Human CD303/BDCA-2 Antibody[201A]

<b>Catalog No.</b>	E-AB-F1162E	<b>Reactivity</b>	Human
<b>Storage</b>	Store at 2~8°C, Avoid freeze / thaw cycles	<b>Applications</b>	FCM

**Important Note:** Centrifuge before opening to ensure complete recovery of vial contents.

### Antigen Information

<b>Alternate Names</b>	BDCA2,CLECSF11,CLECSF7,DLEC,HECL
<b>Uniprot ID</b>	Q8WTT0
<b>Background</b>	CD303, also known as BDCA-2 and CLEC4C, is a 38 kD type II transmembrane glycoprotein. It is a member of the C-type lectin superfamily. CD303 is expressed by plasmacytoid dendritic cells (pDCs) and is involved in cell adhesion, signaling, and antigen capture and processing. Crosslinking of CD303 inhibits the production of IFN- $\alpha/\beta$ and TLR-9 induced pDCs maturation.

### Product Details

<b>Form</b>	Liquid
<b>Size</b>	20Tests/100Tests/100Tests×2
<b>Clone No.</b>	201A
<b>Host</b>	Mouse
<b>Isotype</b>	Mouse IgG2a, $\kappa$
<b>Reactivity</b>	Human
<b>Application</b>	FCM
<b>Isotype Control</b>	<a href="#">APC Mouse IgG2a, <math>\kappa</math> Isotype Control[C1.18.4]</a> <a href="#">[Product E-AB-F09802E]</a>
<b>Storage Buffer</b>	Phosphate buffered solution, pH 7.2, containing 0.09% stabilizer and 1% protein protectant.
<b>Shipping</b>	Biological ice pack at 4 °C
<b>Stability &amp; Storage</b>	Keep as concentrated solution. Store at 2~8°C and protected from prolonged exposure to light.Do not freeze. This product is guaranteed up to one year from purchase.

## Fluorophore

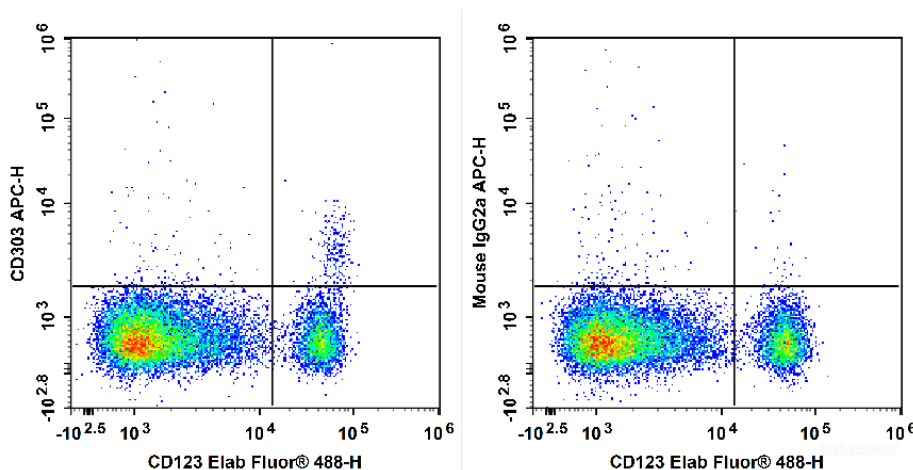
**Conjugation:** APC

APC is designed to be excited by the Red (627-640 nm) laser and detected using an optical filter centered near 660 nm (e.g., a 660/20 nm bandpass filter).

## Recommended usage

Each lot of this antibody is quality control tested by flow cytometric analysis. **The amount of the reagent is suggested to be used 5 µL of antibody per test (million cells in 100 µL staining volume or per 100 µL of whole blood).** Please check your vial before the experiment. Since applications vary, the appropriate dilutions must be determined for individual use.

## Product data



Human peripheral blood are stained with Elab Fluor® 488 Anti-Human CD123 Antibody and APC Anti-Human CD303 Antibody[201A] (Left). Cells in the monocyte gate were used for analysis. Cells are stained with Elab Fluor® 488 Anti-Human CD123 Antibody and APC Mouse IgG2a, κ Isotype Control (Right).

## Related Information

1. Sample Preparation for Flow Cytometry <https://www.elabscience.com/List-detail-5594.html>
2. Staining Cell Surface Targets for Flow Cytometry <https://www.elabscience.com/List-detail-5568.html>
3. Flow Cytometry Troubleshooting Tips <https://www.elabscience.com/List-detail-5593.html>
4. How to select the appropriate detection channel through the spectrogram? <https://www.elabscience.com/List-detail-459742.html>