

PE Anti-Human CD61 Antibody[VI-PL2]

Catalog No.	E-AB-F1166D	Reactivity	Human
Storage	Store at 2~8°C, Avoid freeze / thaw cycles	Applications	FCM

Important Note: Centrifuge before opening to ensure complete recovery of vial contents.

Antigen Information

Alternate Names	GP3A,GPIIIa,ITGB3,Integrin beta-3
Uniprot ID	P05106
Background	CD61, also known as integrin $\beta 3$ and glycoprotein IIIa (gpIIIa), is a 90 kD type I integral transmembrane glycoprotein. It is a member of the integrin family, associating with platelet gpIIb (CD41) to form CD41/CD61 complex and with integrin αV (CD51) to form $\alpha V/\beta 3$ (CD51/CD61) integrin. CD41/CD61 is expressed on platelets and megakaryocytes, and plays a role in platelet activation and aggregation through interaction with fibrinogen, fibronectin, vWF, and other RGD-containing adhesion molecules. CD51/CD61 is expressed on platelets, osteoclasts, fibroblasts, macrophages, and some tumor cells involved in tumor metastasis, and in adenovirus infection through binding to RGD motif in extracellular matrix proteins.

Product Details

Form	Liquid
Size	20Tests/100Tests/100Tests×2
Clone No.	VI-PL2
Host	Mouse
Isotype	Mouse IgG1, κ
Reactivity	Human
Application	FCM
Isotype Control	PE Mouse IgG1, κ Isotype Control[MOPC-21] [Product E-AB-F09792D]
Storage Buffer	Phosphate buffered solution, pH 7.2, containing 0.09% stabilizer and 1% protein protectant.
Shipping	Biological ice pack at 4 °C
Stability & Storage	Keep as concentrated solution. Store at 2~8°C and protected from prolonged exposure to light.Do not freeze. This product is guaranteed up to one year from purchase.

For Research Use Only

Fluorophore

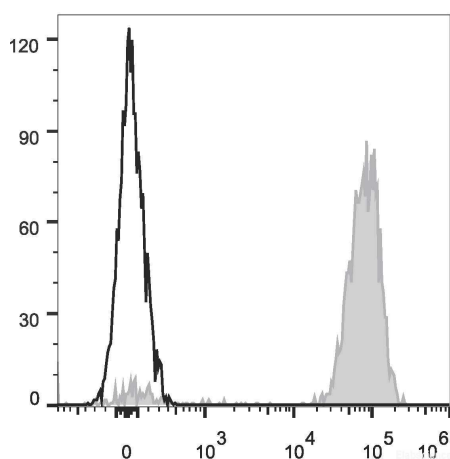
Conjugation: PE

PE is designed to be excited by the Blue (488 nm), Green (532 nm) and Yellow-Green (561 nm) lasers and detected using an optical filter centered near 575 nm (e.g., a 585/42 nm bandpass filter).

Recommended usage

Each lot of this antibody is quality control tested by flow cytometric analysis. **The amount of the reagent is suggested to be used 5 μ L of antibody per test (million cells in 100 μ L staining volume or per 100 μ L of whole blood).** Please check your vial before the experiment. Since applications vary, the appropriate dilutions must be determined for individual use.

Product data



Human peripheral blood platelets are stained with PE Anti-Human CD61 Antibody (filled gray histogram). Unstained platelets (empty black histogram) are used as control.

Related Information

1. Sample Preparation for Flow Cytometry <https://www.elabscience.com/List-detail-5594.html>
2. Staining Cell Surface Targets for Flow Cytometry <https://www.elabscience.com/List-detail-5568.html>
3. Flow Cytometry Troubleshooting Tips <https://www.elabscience.com/List-detail-5593.html>
4. How to select the appropriate detection channel through the spectrogram? <https://www.elabscience.com/List-detail-459742.html>