

## PE Anti-Human IL-17A Antibody[BL168]

**Catalog No.** E-AB-F1173D

**Storage** Store at 2~8°C, Avoid freeze / thaw cycles

**Reactivity** Human

**Applications** ICFCM

**Important Note:** Centrifuge before opening to ensure complete recovery of vial contents.

### Antigen Information

**Alternate Names** CTLA8, IL17,CTLA-8,IL 17A

**Uniprot ID** Q16552

**Background** IL-17A is the founding member of the IL-17 family, a group of six structurally related pro-inflammatory cytokines. IL-17A, secreted by activated CD4+ Th17 cell subpopulation, elicits multiple biological activities on a variety of cells including: the induction of IL-6, IL-8, G-CSF, and PGE2 production in epithelial, endothelial or fibroblasts; the enhancement of surface expression of ICAM-1 in fibroblasts; activation of NF-κB and costimulation of T cell proliferation. Recent studies demonstrated that, in mice, activated IL-17-secreting CD4+ helper T cells (Th17 cells) mediate an autoimmune arthritis that clinically and immunologically resembles rheumatoid arthritis (RA). Human IL-17A shows 63%, 63%, and 72% amino acid sequence identity to rat IL-17A, mouse IL-17A, and a protein encoded by the ORF13 gene of herpesvirus Saimiri (HVS), respectively.

### Product Details

**Form** Liquid

**Size** 20Tests/100Tests/100Tests×2

**Clone No.** BL168

**Host** Mouse

**Isotype** Mouse IgG1, κ

**Reactivity** Human

**Application** ICFCM

**Isotype Control** [PE Mouse IgG1, κ Isotype Control\[MOPC-21\] \[Product E-AB-F09792D\]](#)

**Storage Buffer** Phosphate buffered solution, pH 7.2, containing 0.09% stabilizer and 1% protein protectant.

**Shipping** Biological ice pack at 4 °C

**Stability & Storage** Keep as concentrated solution.

Store at 2~8°C and protected from prolonged exposure to light.Do not freeze.

This product is guaranteed up to one year from purchase.

### For Research Use Only

## Fluorophore

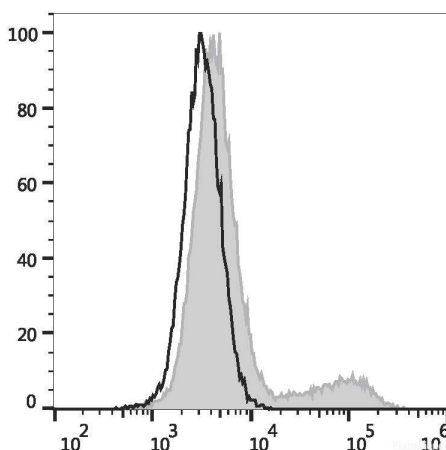
### Conjugation: PE

PE is designed to be excited by the Blue (488 nm), Green (532 nm) and Yellow-Green (561 nm) lasers and detected using an optical filter centered near 575 nm (e.g., a 585/42 nm bandpass filter).

## Recommended usage

Each lot of this antibody is quality control tested by flow cytometric analysis. **The amount of the reagent is suggested to be used 5 µL of antibody per test (million cells in 100 µL staining volume or per 100 µL of whole blood).** Please check your vial before the experiment. Since applications vary, the appropriate dilutions must be determined for individual use.

## Product data



HEK293T cells transiently transfected with pcDNA3.1 plasmid encoding Human IL-17A gene are stained with PE Anti-Human IL-17A Antibody (filled gray histogram) or PE Mouse IgG1, κ Isotype Control (empty black histogram).

## Related Information

1. Sample Preparation for Flow Cytometry <https://www.elabscience.com/List-detail-5594.html>
2. Staining Intracellular Antigens for Flow Cytometry <https://www.elabscience.com/List-detail-5570.html>
3. Flow Cytometry Troubleshooting Tips <https://www.elabscience.com/List-detail-5593.html>
4. How to select the appropriate detection channel through the spectrogram? <https://www.elabscience.com/List-detail-459742.html>