

Elab Fluor® 647 Anti-Human CD37 Antibody[IPO-24]

Catalog No.	E-AB-F1063M	Reactivity	Human
Storage	Store at 2~8°C, Avoid freeze / thaw cycles	Applications	FCM

Important Note: Centrifuge before opening to ensure complete recovery of vial contents.

Antigen Information

Alternate Names	Leukocyte antigen CD37,CD37,Tspan-26,TSPAN26
Uniprot ID	P11049
Background	CD37 is a 40-52 kD type II transmembrane protein, also known as tetraspanin-26. It is a member of the transmembrane tetraspanin family. It can interact with integrins and other transmembrane 4 superfamily members (CD53, CD81, CD82). CD37 is expressed predominantly on B cells; low expression is detected on T cells and myeloid cells. No expression is reported on NK cells and plasma cells. It is involved in regulation of T cell proliferation.

Product Details

Form	Liquid
Size	20Tests/100Tests/100Tests×2
Clone No.	IPO-24
Host	Mouse
Isotype	Mouse IgG2b, κ
Reactivity	Human
Application	FCM
Isotype Control	Elab Fluor® 647 Mouse IgG2b, κ Isotype Control[MPC-111][Product E-AB-F09812M]
Storage Buffer	Phosphate buffered solution, pH 7.2, containing 0.09% stabilizer and 1% protein protectant.
Shipping	Biological ice pack at 4 °C
Stability & Storage	Keep as concentrated solution. Store at 2~8°C and protected from prolonged exposure to light.Do not freeze. This product is guaranteed up to one year from purchase.

For Research Use Only

Fluorophore

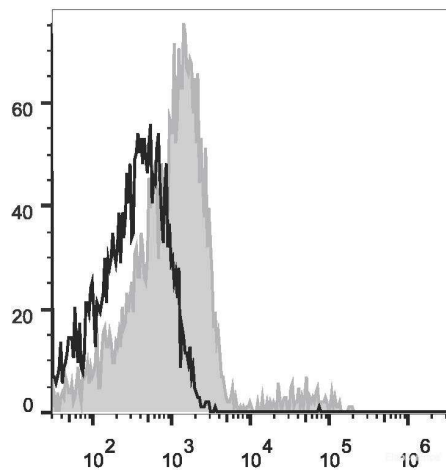
Conjugation: Elab Fluor® 647

Elab Fluor® 647 is designed to be excited by the Red laser (627-640 nm) and detected using an optical filter centered near 670 nm (e.g., a 660/20 nm bandpass filter).

Recommended usage

Each lot of this antibody is quality control tested by flow cytometric analysis. **The amount of the reagent is suggested to be used 5 µL of antibody per test (million cells in 100 µL staining volume or per 100 µL of whole blood).** Please check your vial before the experiment. Since applications vary, the appropriate dilutions must be determined for individual use.

Product data



Human peripheral blood lymphocytes are stained with Elab Fluor® 647 Anti-Human CD37 Antibody (filled gray histogram). Unstained lymphocytes (empty black histogram) are used as control.

Related Information

1. Sample Preparation for Flow Cytometry <https://www.elabscience.com/List-detail-5594.html>
2. Staining Cell Surface Targets for Flow Cytometry <https://www.elabscience.com/List-detail-5568.html>
3. Flow Cytometry Troubleshooting Tips <https://www.elabscience.com/List-detail-5593.html>
4. How to select the appropriate detection channel through the spectrogram? <https://www.elabscience.com/List-detail-459742.html>