

AF/LE Purified Anti-Mouse CD62L Antibody[Mel14]

Catalog No. E-AB-F10110

Note: Centrifuge before opening to ensure complete recovery of vial contents.

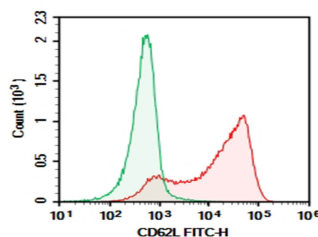
Description

Reactivity	Mouse
Host	Rat
Isotype	Rat IgG2a, κ
Clone	Mel14
Conjugation	Unconjugated
Buffer	0.2 μ m filtered in PBS, pH 7.2. Azide Free (AF)/Low Endotoxin (LE): Contains no stabilizers or stabilizers. Endotoxin level is < 2 EU/mg as Determined by LAL gel clotting assay.

Applications Recommended Dilution

FCM	2 μ g/mL (1×10^5 – 5×10^5 cells)
------------	---

Data



C57/BL6 Mouse splenocytes were stained with 0.2 μ g AF/LE Purified Anti-Mouse CD62L Antibody[Mel14] (Right) and 0.2 μ g Rat IgG2a, κ Isotype Control(Left), followed by FITC-conjugated Goat Anti-Rat IgG Secondary Antibody.

Preparation & Storage

Storage This product can be stored at 2–8°C for 12 months. Do not freeze.

Background

CD62L is a 74–95 kD glycoprotein also known as L-selectin, LECAM-1, Ly-22, LAM-1, and MEL-14. It is a member of the selectin family and is expressed on the majority of B and naïve T cells, a subset of memory T cells, monocytes, granulocytes, most thymocytes, and a subset of NK cells. CD62L is important in lymphocyte homing to high endothelial venules (HEV) in peripheral lymph nodes and leukocyte 'rolling' on activated endothelium. CD62L also contributes to neutrophil emigration at inflammatory sites. CD62L is rapidly shed from lymphocytes and neutrophils upon cellular activation and the expression levels of CD62L (in conjunction with other markers) have been used to distinguish naïve, effector, and memory T cells. CD62L has been reported to interact with CD34, GlyCAM-1, and MAdCAM-1.

For Research Use Only