

## Elab Fluor® 488 Anti-Mouse CD11c Antibody[N418]

<b>Catalog No.</b>	E-AB-F0991UL	<b>Reactivity</b>	Mouse
<b>Storage</b>	Store at 2~8°C, Avoid freeze / thaw cycles	<b>Applications</b>	FCM

**Important Note:** Centrifuge before opening to ensure complete recovery of vial contents.

### Antigen Information

<b>Alternate Names</b>	Integrin alpha-X, Itgax, CD11 antigen-like family member C, Leukocyte adhesion receptor p150+95, CD11c
<b>Uniprot ID</b>	Q9QXH4
<b>Background</b>	CD11c is a 150 kD glycoprotein also known as $\alpha$ X integrin, CR4, and p150. CD11c forms a $\alpha$ X $\beta$ 2 heterodimer with $\beta$ 2 integrin (CD18). It is primarily expressed on dendritic cells, NK cells, a subset of intestinal intraepithelial lymphocytes (IEL), and some activated T cells. The $\alpha$ X $\beta$ 2 integrin plays an important role in cell-cell contact by binding its ligands: iC3b, fibrinogen and CD54.

### Product Details

<b>Form</b>	Liquid
<b>Concentration</b>	0.5 mg/mL
<b>Size</b>	25 $\mu$ g/100 $\mu$ g
<b>Clone No.</b>	N418
<b>Host</b>	Armenian Hamster
<b>Isotype</b>	Armenian Hamster IgG
<b>Reactivity</b>	Mouse
<b>Application</b>	FCM
<b>Isotype Control</b>	<a href="#">Elab Fluor® 488 Armenian Hamster IgG Isotype Control[PIP] [Product E-AB-F09853L]</a>
<b>Storage Buffer</b>	Phosphate buffered solution, pH 7.2, containing 0.09% stabilizer and 1% protein protectant.
<b>Shipping</b>	Biological ice pack at 4 °C
<b>Stability &amp; Storage</b>	Keep as concentrated solution. Store at 2~8°C and protected from prolonged exposure to light. Do not freeze. This product is guaranteed up to one year from purchase.

## Fluorophore

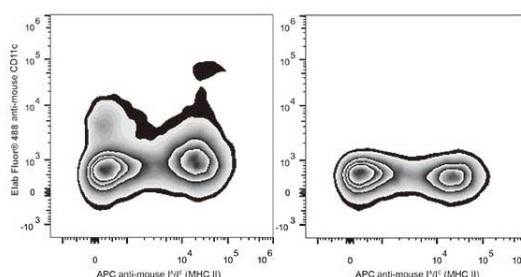
**Conjugation:** Elab Fluor® 488

Elab Fluor® 488 is designed to be excited by the Blue laser (488 nm) and detected using an optical filter centered near 520 nm (e.g., a 525/40 nm bandpass filter).

## Recommended usage

Each lot of this antibody is quality control tested by flow cytometric analysis. Please check your vial before the experiment. Since applications vary, the appropriate dilutions must be determined for individual use. We suggest each investigator should titrate the reagent to obtain optimal results [The recommended concentration is 0.1-1 µg/10<sup>6</sup> cells in 100 µL volume].

## Product data



Elabscience®

C57BL/6 murine splenocytes are stained with Elab Fluor® 488 Anti-Mouse CD11c Antibody and APC Anti-Mouse MHC II (I-A/I-E) Antibody (Left). Splenocytes stained with APC Anti-Mouse MHC II (I-A/I-E) Antibody (Right) are used as control.

## Related Information

1. Sample Preparation for Flow Cytometry <https://www.elabscience.com/List-detail-5594.html>
2. Staining Cell Surface Targets for Flow Cytometry <https://www.elabscience.com/List-detail-5568.html>
3. Flow Cytometry Troubleshooting Tips <https://www.elabscience.com/List-detail-5593.html>
4. How to select the appropriate detection channel through the spectrogram? <https://www.elabscience.com/List-detail-459742.html>