

PE/Cyanine5.5 Anti-Rat CD8a Antibody[OX-8]

Catalog No.	E-AB-F1098UI	Reactivity	Rat
Storage	Store at 2~8°C, Avoid freeze / thaw cycles	Applications	FCM

Important Note: Centrifuge before opening to ensure complete recovery of vial contents.

Antigen Information

Alternate Names	T-cell surface glycoprotein CD8 alpha chain,CD8A,T-lymphocyte differentiation antigen T8/Leu-2,MAL
Uniprot ID	P07725
Background	CD8a is a 32 kD glycoprotein also known as T8, Lyt2, Ly-2, and CD8 α . CD8a is a member of the immunoglobulin superfamily expressed on most thymocytes, subset of mature T cells, most NK cells, macrophages, and some activated CD4+ T cells (not resting). CD8a forms heterodimers with the CD8 β chain (CD8b) on the surface of most thymocytes, while mature peripheral T lymphocytes express almost exclusively the CD8 $\alpha\beta$ heterodimer. Intestinal intraepithelial lymphocytes express CD8a without CD8b. CD8 is an antigen co-receptor on T cells that interacts with MHC class I on antigen-presenting cells or epithelial cells. CD8 participates in T cell activation through its association with the T cell receptor complex and protein tyrosine kinase lck (p56lck).

Product Details

Form	Liquid
Concentration	0.2 mg/mL
Size	25 μ g/100 μ g
Clone No.	OX-8
Host	Mouse
Isotype	Mouse IgG1, κ
Reactivity	Rat
Application	FCM
Isotype Control	PE/Cyanine5.5 Mouse IgG1, κ Isotype Control[MOPC-21] [Product E-AB-F09793]
Storage Buffer	Phosphate buffered solution, pH 7.2, containing 0.09% stabilizer and 1% protein protectant.
Shipping	Biological ice pack at 4 °C
Stability & Storage	Keep as concentrated solution. Store at 2~8°C and protected from prolonged exposure to light.Do not freeze. This product is guaranteed up to one year from purchase.

For Research Use Only

Fluorophore

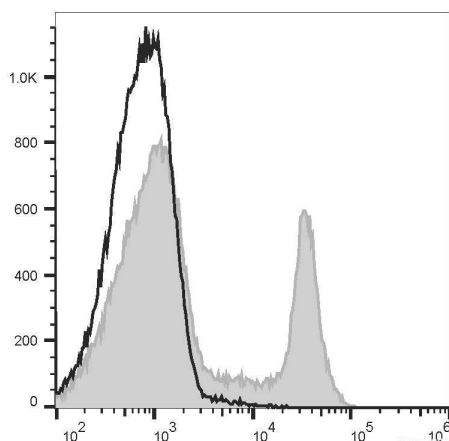
Conjugation: PE/Cyanine5.5

PE/Cyanine5.5 is designed to be excited by the Blue (488 nm), Green (532 nm) and yellow-green (561 nm) lasers and detected using an optical filter centered near 690 nm (e.g., a 690/50 nm bandpass filter).

Recommended usage

Each lot of this antibody is quality control tested by flow cytometric analysis. Please check your vial before the experiment. Since applications vary, the appropriate dilutions must be determined for individual use. We suggest each investigator should titrate the reagent to obtain optimal results [The recommended concentration is 0.1-1 $\mu\text{g}/10^6$ cells in 100 μL volume].

Product data



Rat splenocytes are stained with PE/Cyanine5.5 Anti-Rat CD8a Antibody[OX-8] (filled gray histogram) or PE/Cyanine5.5 Mouse IgG1, κ Isotype Control (empty black histogram).

Related Information

1. Sample Preparation for Flow Cytometry <https://www.elabscience.com/List-detail-5594.html>
2. Staining Cell Surface Targets for Flow Cytometry <https://www.elabscience.com/List-detail-5568.html>
3. Flow Cytometry Troubleshooting Tips <https://www.elabscience.com/List-detail-5593.html>
4. How to select the appropriate detection channel through the spectrogram? <https://www.elabscience.com/List-detail-459742.html>