

PerCP/Cyanine5.5 Anti-Mouse CD25 Antibody[PC-61.5.3]

Catalog No.	E-AB-F1102UJ	Reactivity	Mouse
Storage	Store at 2~8°C, Avoid freeze / thaw cycles	Applications	FCM

Important Note: Centrifuge before opening to ensure complete recovery of vial contents.

Antigen Information

Alternate Names	Interleukin-2 receptor subunit alpha,IL2RA,IL-2 receptor subunit alpha,IL-2-RA,IL-2R subunit alpha,IL-2-RA,TAC antigen,p55,p55
Uniprot ID	P01590
Background	CD25 is a 55 kD glycoprotein, also known as the low affinity IL-2R α , Ly-43, p55, or Tac. It is expressed on activated T and B cells, thymocyte subset, pre-B cells, and T regulatory cells. In association with CD122 (IL-2R β) and CD132(common γ chain), CD25 forms the high affinity signaling IL-2 receptor.

Product Details

Form	Liquid
Concentration	0.2 mg/mL
Size	25 μ g/100 μ g
Clone No.	PC-61.5.3
Host	Rat
Isotype	Rat IgG1, κ
Reactivity	Mouse
Application	FCM
Isotype Control	PerCP/Cyanine5.5 Rat IgG1, κ Isotype Control[HRPN] [Product E-AB-F09823J]
Storage Buffer	Phosphate buffered solution, pH 7.2, containing 0.09% stabilizer and 1% protein protectant.
Shipping	Biological ice pack at 4 °C
Stability & Storage	Keep as concentrated solution. Store at 2~8°C and protected from prolonged exposure to light.Do not freeze. This product is guaranteed up to one year from purchase.

Fluorophore

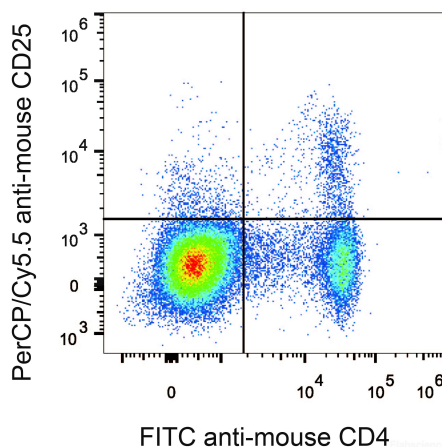
Conjugation: PerCP/Cyanine5.5

PerCP/Cyanine5.5 is designed to be excited by the blue laser (488 nm) and detected using an optical filter centered near 675 nm (e.g., a 690/50 nm bandpass filter).

Recommended usage

Each lot of this antibody is quality control tested by flow cytometric analysis. Please check your vial before the experiment. Since applications vary, the appropriate dilutions must be determined for individual use. We suggest each investigator should titrate the reagent to obtain optimal results [The recommended concentration is 0.1-1 $\mu\text{g}/10^6$ cells in 100 μL volume].

Product data



C57BL/6 murine splenocytes are stained with PerCP/Cyanine5.5 Anti-Mouse CD25 Antibody and FITC Anti-Mouse CD4 Antibody Antibody.

Related Information

1. Sample Preparation for Flow Cytometry <https://www.elabscience.com/List-detail-5594.html>
2. Staining Cell Surface Targets for Flow Cytometry <https://www.elabscience.com/List-detail-5568.html>
3. Flow Cytometry Troubleshooting Tips <https://www.elabscience.com/List-detail-5593.html>
4. How to select the appropriate detection channel through the spectrogram? <https://www.elabscience.com/List-detail-459742.html>