

Elab Fluor® 647 Anti-Mouse CD45R/B220 Antibody[RA3.3A 1/6.1]

Catalog No.	E-AB-F1112UM	Reactivity	Mouse
Storage	Store at 2~8°C, Avoid freeze / thaw cycles	Applications	FCM

Important Note: Centrifuge before opening to ensure complete recovery of vial contents.

Antigen Information

Alternate Names	B220
Background	CD45R, also known as B220, is an isoform of CD45. It is a member of the protein tyrosine phosphatase (PTP) family with a molecular weight of approximately 180-240 kD. CD45R is expressed on B cells (at all developmental stages from pro-B cells through mature B cells), activated B cells, and subsets of T and NK cells. CD45R (B220) is also expressed on a subset of abnormal T cells involved in the pathogenesis of systemic autoimmunity in MRL-Fas ^{lpr} and MRL-Fas ^{gld} mice. It plays a critical role in TCR and BCR signaling. The primary ligands for CD45 are galectin-1, CD2, CD3, and CD4. CD45R is commonly used as a pan-B cell marker; however, CD19 may be more appropriate for B cell specificity.

Product Details

Form	Liquid
Concentration	0.5 mg/mL
Size	25µg/100µg
Clone No.	RA3.3A 1/6.1
Host	Rat
Isotype	Rat IgM, κ
Reactivity	Mouse
Application	FCM
Isotype Control	Elab Fluor® 647 Rat IgM, κ Isotype Control[RTK2118] [Product E-AB-F09773M]
Storage Buffer	Phosphate buffered solution, pH 7.2, containing 0.09% stabilizer and 1% protein protectant.
Shipping	Biological ice pack at 4 °C
Stability & Storage	Keep as concentrated solution. Store at 2~8°C and protected from prolonged exposure to light. Do not freeze. This product is guaranteed up to one year from purchase.

For Research Use Only

Fluorophore

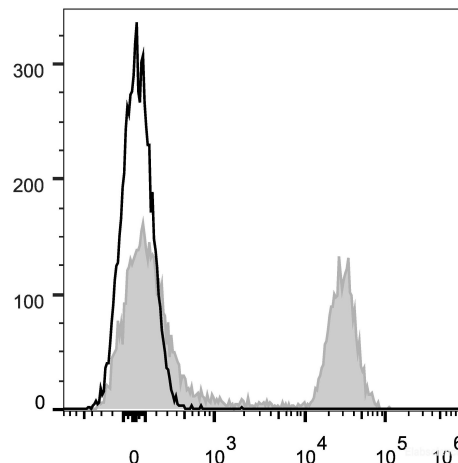
Conjugation: Elab Fluor® 647

Elab Fluor® 647 is designed to be excited by the Red laser (627-640 nm) and detected using an optical filter centered near 670 nm (e.g., a 660/20 nm bandpass filter).

Recommended usage

Each lot of this antibody is quality control tested by flow cytometric analysis. Please check your vial before the experiment. Since applications vary, the appropriate dilutions must be determined for individual use. We suggest each investigator should titrate the reagent to obtain optimal results [The recommended concentration is 0.1-1 µg/10⁶ cells in 100 µL volume].

Product data



C57BL/6 murine splenocytes are stained with Elab Fluor® 647 Anti-Mouse CD45R/B220 Antibody (filled gray histogram). Unstained splenocytes (empty black histogram) are used as control.

Related Information

1. Sample Preparation for Flow Cytometry <https://www.elabscience.com/List-detail-5594.html>
2. Staining Cell Surface Targets for Flow Cytometry <https://www.elabscience.com/List-detail-5568.html>
3. Flow Cytometry Troubleshooting Tips <https://www.elabscience.com/List-detail-5593.html>
4. How to select the appropriate detection channel through the spectrogram? <https://www.elabscience.com/List-detail-459742.html>