

FITC Anti-Mouse FcεRIα Antibody[MAR-1]

Catalog No.	E-AB-F1188UC	Reactivity	Mouse
Storage	Store at 2~8°C, Avoid freeze / thaw cycles	Applications	FCM

Important Note: Centrifuge before opening to ensure complete recovery of vial contents.

Antigen Information

Alternate Names	High affinity immunoglobulin epsilon receptor subunit alpha,Fc-epsilon RI-alpha,FcERI,FcεRIα
Uniprot ID	P20489
Background	FcεRIα is a transmembrane protein belonging to the Ig superfamily. FcεRIα forms a tetrameric complex with one β and two γ-subunits. The FcεRI complex plays an important role in triggering IgE-mediated allergic reactions. It is abundantly expressed on mast and basophils and up-regulated by the presence of IgE. Following stimulation via FcεRIα, mast cells and basophils release bioactive chemical mediators such as histamine, resulting in the initiation of allergic reactions. Cross linking of the high-affinity receptor for IgE on tissue mast cells triggers immediate hypersensitivity with local symptoms. The MAR-1 monoclonal antibody reacts with the FcεRIα subunit.

Product Details

Form	Liquid
Concentration	0.5 mg/mL
Size	25μg/100μg
Clone No.	MAR-1
Host	Armenian Hamster
Isotype	Armenian Hamster IgG
Reactivity	Mouse
Application	FCM
Isotype Control	FITC Armenian Hamster IgG Isotype Control[PIP] [Product E-AB-F09853C]
Storage Buffer	Phosphate buffered solution, pH 7.2, containing 0.09% stabilizer and 1% protein protectant.
Shipping	Biological ice pack at 4 °C
Stability & Storage	Keep as concentrated solution. Store at 2~8°C and protected from prolonged exposure to light.Do not freeze. This product is guaranteed up to one year from purchase.

For Research Use Only

Fluorophore

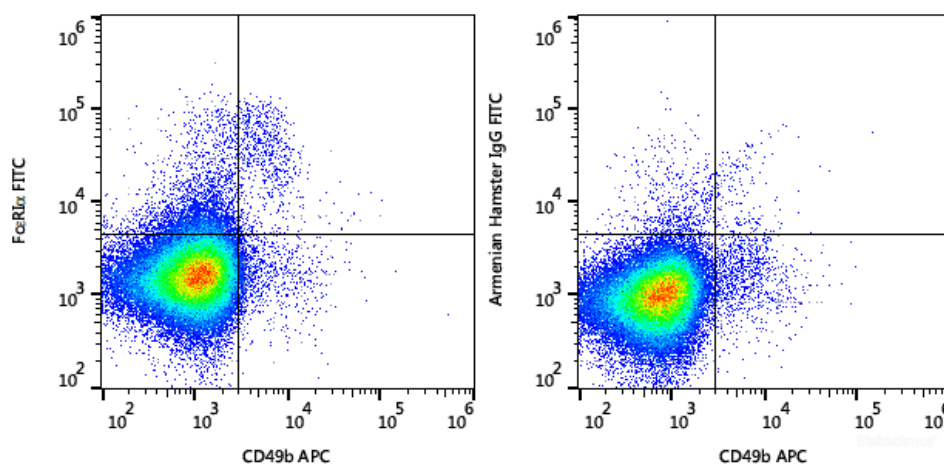
Conjugation: FITC

FITC is designed to be excited by the Blue laser (488 nm) and detected using an optical filter centered near 530 nm (e.g., a 525/40 nm bandpass filter).

Recommended usage

Each lot of this antibody is quality control tested by flow cytometric analysis. Please check your vial before the experiment. Since applications vary, the appropriate dilutions must be determined for individual use. We suggest each investigator should titrate the reagent to obtain optimal results [The recommended concentration is 0.1-1 $\mu\text{g}/10^6$ cells in 100 μL volume].

Product data



C57BL/6 murine bone marrow cells are stained with APC Anti-Mouse CD49b Antibody and FITC Anti-Mouse FcεRIα Antibody (Left). Bone marrow cells stained with APC Anti-Mouse CD49b Antibody and FITC Armenian Hamster IgG Isotype Control (Right) are used as control.

Related Information

1. Sample Preparation for Flow Cytometry <https://www.elabscience.com/List-detail-5594.html>
2. Staining Cell Surface Targets for Flow Cytometry <https://www.elabscience.com/List-detail-5568.html>
3. Flow Cytometry Troubleshooting Tips <https://www.elabscience.com/List-detail-5593.html>
4. How to select the appropriate detection channel through the spectrogram? <https://www.elabscience.com/List-detail-459742.html>