

Elab Fluor® 488 Anti-Human CD95/Fas Antibody[DX2]

Catalog No.	E-AB-F1168L	Reactivity	Human
Storage	Store at 2~8°C, Avoid freeze / thaw cycles	Applications	FCM

Important Note: Centrifuge before opening to ensure complete recovery of vial contents.

Antigen Information

Alternate Names	APT1,FAS1,TNFRSF6,Apo-1 antigen,FASLG receptor
Uniprot ID	P25445
Background	CD95 is a 45 kD single chain type I glycoprotein also known as Fas, APO-1, and TNFRSF6. It is a member of the TNF receptor superfamily. CD95 is expressed on T and B lymphocytes, monocytes, neutrophils, and fibroblasts. CD95 expression is upregulated by activation. The extracellular region of CD95 binds to CD178 (Fas ligand). CD178 binding to CD95 induces apoptosis and has been shown to play a role in the maintenance of peripheral tolerance.

Product Details

Form	Liquid
Size	20Tests/100Tests/100Tests×2
Clone No.	DX2
Host	Mouse
Isotype	Mouse IgG1, κ
Reactivity	Human
Application	FCM
Isotype Control	Elab Fluor® 488 Mouse IgG1, κ Isotype Control[MOPC-21] [Product E-AB-F09792L]
Storage Buffer	Phosphate buffered solution, pH 7.2, containing 0.09% stabilizer and 1% protein protectant.
Shipping	Biological ice pack at 4 °C
Stability & Storage	Keep as concentrated solution. Store at 2~8°C and protected from prolonged exposure to light.Do not freeze. This product is guaranteed up to one year from purchase.

For Research Use Only

Fluorophore

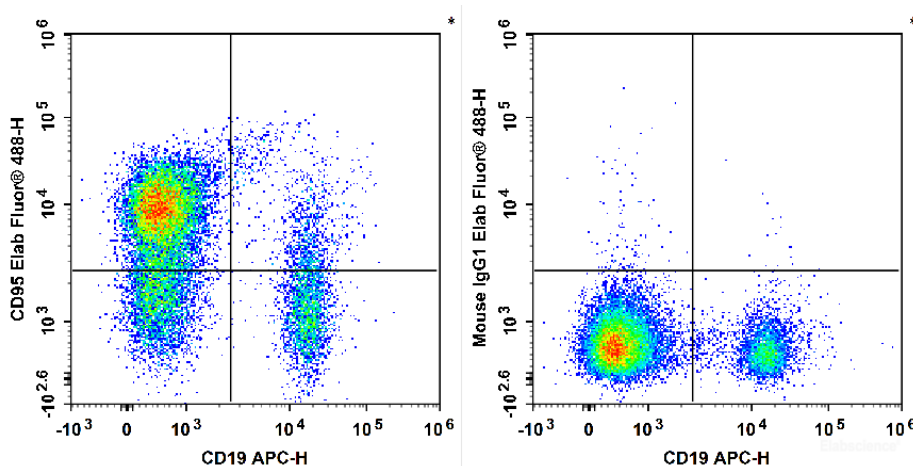
Conjugation: Elab Fluor® 488

Elab Fluor® 488 is designed to be excited by the Blue laser (488 nm) and detected using an optical filter centered near 520 nm (e.g., a 525/40 nm bandpass filter).

Recommended usage

Each lot of this antibody is quality control tested by flow cytometric analysis. **The amount of the reagent is suggested to be used 5 µL of antibody per test (million cells in 100 µL staining volume or per 100 µL of whole blood).** Please check your vial before the experiment. Since applications vary, the appropriate dilutions must be determined for individual use.

Product data



Human peripheral blood lymphocytes are stained with Elab Fluor® 488 Anti-Human CD95 Antibody[DX2] (filled gray histogram) or Elab Fluor® 488 Mouse IgG1, κ Isotype Control (empty black histogram).

Related Information

1. Sample Preparation for Flow Cytometry <https://www.elabscience.com/List-detail-5594.html>
2. Staining Cell Surface Targets for Flow Cytometry <https://www.elabscience.com/List-detail-5568.html>
3. Flow Cytometry Troubleshooting Tips <https://www.elabscience.com/List-detail-5593.html>
4. How to select the appropriate detection channel through the spectrogram? <https://www.elabscience.com/List-detail-459742.html>