

HSPA1A Polyclonal Antibody

Catalog No. E-AB-40302

Note: Centrifuge before opening to ensure complete recovery of vial contents.

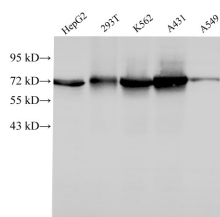
Description

Reactivity	Human, Mouse, Rat
Immunogen	Recombinant Human Heat shock 70 kDa protein 1A protein
Host	Rabbit
Isotype	IgG
Purification	Antigen Affinity Purification
Conjugation	Unconjugated
Buffer	PBS with 0.02% sodium azide, 1% protective protein and 50% glycerol, pH7.4

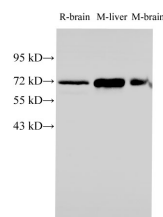
Applications Recommended Dilution

WB	1:1000-1:2000
IHC	1:100-1:300

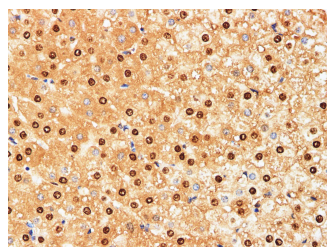
Data



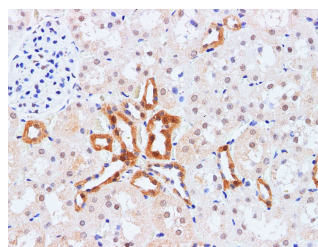
Western Blot analysis of HepG2, 293T, k562, A431 and A549 cells using HSPA1A Polyclonal Antibody at dilution of 1:1000
Observed Mw:70kDa
Calculated Mw:70kDa



Western Blot analysis of Rat brain, Mouse liver and Mouse brain tissues using HSPA1A Polyclonal Antibody at dilution of 1:1000



Immunohistochemistry of paraffin-embedded Human liver using HSPA1A Polyclonal Antibody at dilution of 1:200



Immunohistochemistry of paraffin-embedded Rat kidney using HSPA1A Polyclonal Antibody at dilution of 1:200

Preparation & Storage

For Research Use Only

Storage Store at -20°C. Avoid freeze / thaw cycles.

Background

This intronless gene encodes a 70kDa heat shock protein which is a member of the heat shock protein 70 family. In conjunction with other heat shock proteins, this protein stabilizes existing proteins against aggregation and mediates the folding of newly translated proteins in the cytosol and in organelles. It is also involved in the ubiquitin-proteasome pathway through interaction with the AU-rich element RNA-binding protein 1. The gene is located in the major histocompatibility complex class III region, in a cluster with two closely related genes which encode similar proteins.