

## CK-8 Polyclonal Antibody

**Catalog No.** E-AB-40330

*Note:* Centrifuge before opening to ensure complete recovery of vial contents.

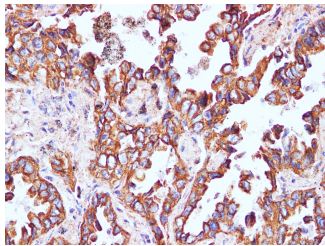
### Description

<b>Reactivity</b>	Human
<b>Immunogen</b>	Recombinant Human type II cytoskeletal 8 protein
<b>Host</b>	Rabbit
<b>Isotype</b>	IgG
<b>Purification</b>	Affinity purification
<b>Conjugation</b>	Unconjugated
<b>Buffer</b>	PBS with 0.05% Proclin300 and 50% glycerol, pH7.4.

### Applications Recommended Dilution

**IHC 1:100-1:200**

### Data



Immunohistochemistry of paraffin-embedded Human lung cancer using CK-8 Polyclonal Antibody at dilution of 1:100

### Preparation & Storage

**Storage** Store at -20°C. Avoid freeze / thaw cycles.

### Background

Cytokeratin 8 (CK8) has a molecular weight of 52.5 KDa, which belongs to the HMW (high molecular weight) B-type Cytokeratin. CK8 is mainly marked on non-squamous epithelium, thus can be used for the diagnosis of adenocarcinoma and ductal carcinoma. Generally, CK8 is not expressed in squamous cell carcinoma. It is reported that hepatocellular carcinoma mainly express CK8 and CK18.

### For Research Use Only