

COL1A1 Polyclonal Antibody

Catalog No. E-AB-40334

Note: Centrifuge before opening to ensure complete recovery of vial contents.

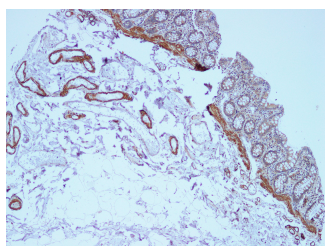
Description

Reactivity	Human
Immunogen	Recombinant Human Collagen alpha-1(I) chain protein
Host	Rabbit
Isotype	IgG
Purification	Affinity purification
Conjugation	Unconjugated
Buffer	PBS with 0.05% Proclin300 and 50% glycerol, pH7.4.

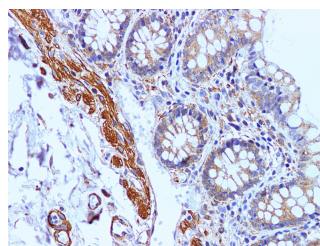
Applications Recommended Dilution

IHC 1:100-1:400

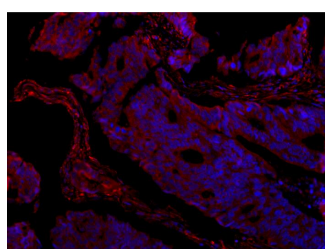
Data



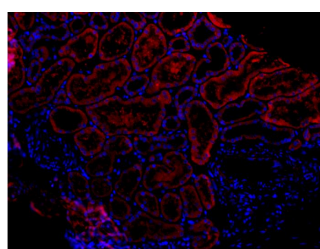
Immunohistochemistry of paraffin-embedded Human colon using COL1A1 Polyclonal Antibody at dilution of 1:100(100×)



Immunohistochemistry of paraffin-embedded Human colon using COL1A1 Polyclonal Antibody at dilution of 1:100(400×)



Immunofluorescence analysis of paraffin-embedded human colon cancer using COL1A1 Antibody at dilution of 1:150.



Immunofluorescence analysis of paraffin-embedded human kidney using COL1A1 Antibody at dilution of 1:150.

Preparation & Storage

Storage Store at -20°C. Avoid freeze / thaw cycles.

Background

COL1A1 (Collagen Type I Alpha 1 Chain) is a Protein Coding gene. Diseases associated with COL1A1 include Caffey

For Research Use Only

Disease and Osteogenesis Imperfecta, Type I. Among its related pathways are Collagen chain trimerization and Transcription_Role of VDR in regulation of genes involved in osteoporosis. GO annotations related to this gene include identical protein binding and platelet-derived growth factor binding. An important paralog of this gene is COL2A1. This gene encodes the pro-alpha1 chains of type I collagen whose triple helix comprises two alpha1 chains and one alpha2 chain. Type I is a fibril-forming collagen found in most connective tissues and is abundant in bone, cornea, dermis and tendon. Mutations in this gene are associated with osteogenesis imperfecta types I-IV, Ehlers-Danlos syndrome type VIIA, Ehlers-Danlos syndrome Classical type, Caffey Disease and idiopathic osteoporosis. Reciprocal translocations between chromosomes 17 and 22, where this gene and the gene for platelet-derived growth factor beta are located, are associated with a particular type of skin tumor called dermatofibrosarcoma protuberans, resulting from unregulated expression of the growth factor. Two transcripts, resulting from the use of alternate polyadenylation signals, have been identified for this gene.