

## RBM3 Polyclonal Antibody

Catalog No. E-AB-40323

**Note:** Centrifuge before opening to ensure complete recovery of vial contents.

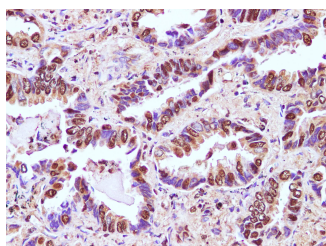
### Description

<b>Reactivity</b>	Human
<b>Immunogen</b>	Recombinant Human RNA-binding protein 3 protein
<b>Host</b>	Rabbit
<b>Isotype</b>	IgG
<b>Purification</b>	Affinity purification
<b>Conjugation</b>	Unconjugated
<b>Buffer</b>	PBS with 0.05% Proclin300 and 50% glycerol, pH7.4.

### Applications Recommended Dilution

IHC 1:100-1:400

### Data



Immunohistochemistry of paraffin-embedded Human lung cancer using RBM3 Polyclonal Antibody at dilution of 1:100

### Preparation & Storage

**Storage** Store at -20°C. Avoid freeze / thaw cycles.

### Background

RBM3, also named as RNPL, is a cold-inducible mRNA binding protein that enhances global protein synthesis at both physiological and mild hypothermic temperatures. It reduces the relative abundance of microRNAs, when overexpressed. RBM3 enhances phosphorylation of translation initiation factors and active polysome formation. It is up-regulated in human tumors. RBM3 is a potential proto-oncogenic proteins upon overexpression.

### For Research Use Only