

PE Anti-Rat CD44H Antibody[OX-49]

Catalog No.	E-AB-F1225UD	Reactivity	Rat
Storage	Store at 2~8°C, Avoid freeze / thaw cycles	Applications	FCM

Important Note: Centrifuge before opening to ensure complete recovery of vial contents.

Antigen Information

Alternate Names	Pgp-1, H-CAM, CD44s, CD44H
Uniprot ID	P26051
Background	CD44 is an 80-95 kD cell surface glycoprotein. It is expressed on all leukocytes, endothelial cells, hepatocytes, and mesenchymal cells. It is up-regulated when T cells and B cells are activated. It was reported that CD44 is a valuable marker for memory T cells. CD44 is an adhesion molecule involved in leukocyte adhesion and homing to lymphoid organs. The OX-49 antibody reacts with CD44H (known as CD44s) expressed on most leukocytes, except for a subset of B lymphocytes. The epitope recognized by OX-49 antibody has been mapped to a region on both the standard, CD44s, and the splice variant, CD44v, isoforms of CD44. However it was reported that OX-49 antibody cannot detect the CD44V isoform, possibly due to conformational changes in the epitope.

Product Details

Form	Liquid
Concentration	0.2 mg/mL
Size	25µg/100µg
Clone No.	OX-49
Host	Mouse
Isotype	Mouse IgG2a, κ
Reactivity	Rat
Application	FCM
Isotype Control	PE Mouse IgG2a, κ Isotype Control[C1.18.4] [Product E-AB-F09803D]
Storage Buffer	Phosphate buffered solution, pH 7.2, containing 0.09% stabilizer and 1% protein protectant.
Shipping	Biological ice pack at 4 °C
Stability & Storage	Keep as concentrated solution. Store at 2~8°C and protected from prolonged exposure to light. Do not freeze. This product is guaranteed up to one year from purchase.

For Research Use Only

Fluorophore

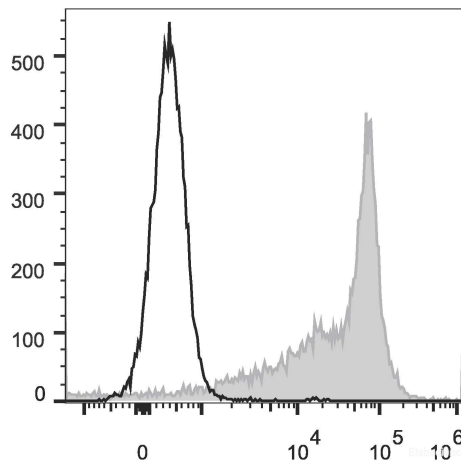
Conjugation: PE

PE is designed to be excited by the Blue (488 nm), Green (532 nm) and Yellow-Green (561 nm) lasers and detected using an optical filter centered near 575 nm (e.g., a 585/42 nm bandpass filter).

Recommended usage

Each lot of this antibody is quality control tested by flow cytometric analysis. Please check your vial before the experiment. Since applications vary, the appropriate dilutions must be determined for individual use. We suggest each investigator should titrate the reagent to obtain optimal results [The recommended concentration is 0.1-1 $\mu\text{g}/10^6$ cells in 100 μL volume].

Product data



Rat splenocytes are stained with PE Anti-Rat CD44H Antibody (filled gray histogram). Unstained splenocytes (empty black histogram) are used as control.

Related Information

1. Sample Preparation for Flow Cytometry <https://www.elabscience.com/List-detail-5594.html>
2. Staining Cell Surface Targets for Flow Cytometry <https://www.elabscience.com/List-detail-5568.html>
3. Flow Cytometry Troubleshooting Tips <https://www.elabscience.com/List-detail-5593.html>
4. How to select the appropriate detection channel through the spectrogram? <https://www.elabscience.com/List-detail-459742.html>