

## PE Anti-Rat CD3 Antibody[G4.18]

|                    |  |                     |     |
|--------------------|--|---------------------|-----|
| <b>Catalog No.</b> | E-AB-F1228D                                | <b>Reactivity</b>   | Rat |
| <b>Storage</b>     | Store at 2~8°C, Avoid freeze / thaw cycles | <b>Applications</b> | FCM |

**Important Note:** Centrifuge before opening to ensure complete recovery of vial contents.

### Antigen Information

|                        |  |
|------------------------|--|
| <b>Alternate Names</b> | T-cell surface glycoprotein CD3 $\delta$ , $\gamma$ , $\epsilon$ , and $\zeta$ chains, CD3 Complex, T3, CD3  |
| <b>Uniprot ID</b>      | P19377, Q64159, D4A5M2   |
| <b>Background</b>      | CD3 is a complex composed of $\delta$ , $\gamma$ , $\epsilon$ , and $\zeta$ chains. They are 20-25 kD members of the immunoglobulin superfamily and associated with the T cell receptor (TCR). CD3 is expressed on thymocytes, peripheral T cells, some NK-T cells, and dendritic epidermal T cells. CD3 is involved in antigen recognition, signal transduction, and T cell activation. |

### Product Details

|                                |   |
|--------------------------------|---|
| <b>Form</b>                    | Liquid  |
| <b>Size</b>                    | 50Tests/100Tests/100Tests $\times$ 2  |
| <b>Clone No.</b>               | G4.18   |
| <b>Host</b>                    | Mouse   |
| <b>Isotype</b>                 | Mouse IgG3, $\kappa$  |
| <b>Reactivity</b>              | Rat   |
| <b>Application</b>             | FCM   |
| <b>Isotype Control</b>         | <a href="#">PE Mouse IgG3, <math>\kappa</math> Isotype Control[A112-3]</a> [ <a href="#">Product E-AB-F09752D</a> ]   |
| <b>Storage Buffer</b>          | Phosphate buffered solution, pH 7.2, containing 0.09% stabilizer and 1% protein protectant.   |
| <b>Shipping</b>                | Biological ice pack at 4 °C   |
| <b>Stability &amp; Storage</b> | Keep as concentrated solution.<br>Store at 2~8°C and protected from prolonged exposure to light. Do not freeze.<br>This product is guaranteed up to one year from purchase. |

### For Research Use Only

## Fluorophore

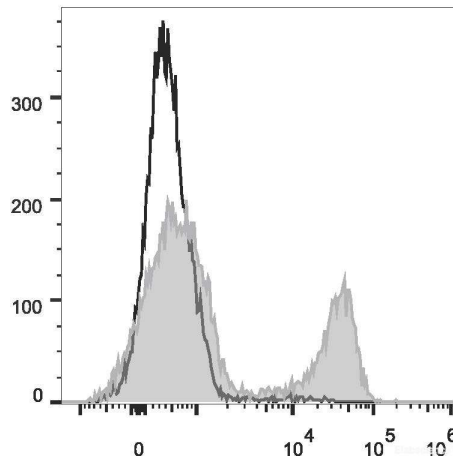
**Conjugation:** PE

PE is designed to be excited by the Blue (488 nm), Green (532 nm) and Yellow-Green (561 nm) lasers and detected using an optical filter centered near 575 nm (e.g., a 585/42 nm bandpass filter).

## Recommended usage

Each lot of this antibody is quality control tested by flow cytometric analysis. **The amount of the reagent is suggested to be used 5  $\mu$ L of antibody per test (million cells in 100  $\mu$ L staining volume or per 100  $\mu$ L of whole blood).** Please check your vial before the experiment. Since applications vary, the appropriate dilutions must be determined for individual use.

## Product data



Rat splenocytes are stained with PE Anti-Rat CD3 Antibody (filled gray histogram). Unstained splenocytes (empty black histogram) are used as control.

## Related Information

1. Sample Preparation for Flow Cytometry <https://www.elabscience.com/List-detail-5594.html>
2. Staining Cell Surface Targets for Flow Cytometry <https://www.elabscience.com/List-detail-5568.html>
3. Flow Cytometry Troubleshooting Tips <https://www.elabscience.com/List-detail-5593.html>
4. How to select the appropriate detection channel through the spectrogram? <https://www.elabscience.com/List-detail-459742.html>