

Recombinant Human UBE2M/UBC12 Protein

Catalog No. PKSH033478

Note: Centrifuge before opening to ensure complete recovery of vial contents.

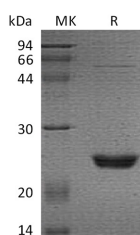
Description

Synonyms	NEDD8-conjugating enzyme Ubc12;NEDD8 carrier protein;NEDD8 protein ligase;Ubiquitin-conjugating enzyme E2 M;UBC12;UBE2M;
Species	Human
Expression Host	E.coli
Sequence	Met1-Lys183
Accession	P61081
Calculated Molecular Weight	20.9 kDa
Observed molecular weight	25 kDa
Tag	None
Bioactivity	Not validated for activity

Properties

Purity	> 95 % as determined by reducing SDS-PAGE.
Endotoxin	< 1.0 EU per µg of the protein as determined by the LAL method.
Storage	Store at < -20°C, stable for 6 months. Please minimize freeze-thaw cycles.
Shipping	This product is provided as liquid. It is shipped at frozen temperature with blue ice/gel packs. Upon receipt, store it immediately at < -20°C.
Formulation	Supplied as a 0.2 µm filtered solution of 50mM HEPES, 2mM DTT, 150mM NaCl, 10% Glycerol, pH 7.5.
Reconstitution	Not Applicable

Data



> 95 % as determined by reducing SDS-PAGE.

Background

UBE2M is a member of the E2 ubiquitin-conjugating enzyme family. Ubiquitination involves at least three classes of enzymes: ubiquitin-activating enzymes; or E1s; ubiquitin-conjugating enzymes; or E2s; and ubiquitin-protein ligases; or E3s. This protein is linked with a ubiquitin-like protein; NEDD8; which can be conjugated to cellular proteins; such as Cdc53/culin. UBE2M accepts the ubiquitin-like protein NEDD8 from the UBA3-NAE1 E1 complex and catalyzes its

For Research Use Only

covalent attachment to other proteins. The specific interaction with the E3 ubiquitin ligase RBX1; but not RBX2; suggests that the RBX1-UBE2M complex neddylates specific target proteins; such as CUL1; CUL2; CUL3 and CUL4. It involved in cell proliferation and is an important cellular mechanism for targeting abnormal or short-lived proteins for degradation.