

Recombinant Human TPP1/CLN2 Protein (His Tag)

Catalog Number:PKSH033493



Note: Centrifuge before opening to ensure complete recovery of vial contents.

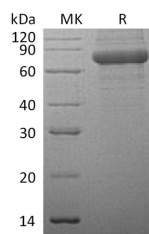
Description

| | |
|------------------------------------|--|
| Synonyms | Tripeptidyl-Peptidase 1;TPP-1;Cell Growth-Inhibiting Gene 1 Protein;Lysosomal Pepstatin-Insensitive Protease;LPIC;Tripeptidyl Aminopeptidase;TPP1;CLN2;GIG1;LPIC;SCAR7;TPP-1 |
| Species | Human |
| Expression Host | HEK293 Cells |
| Sequence | Ser20-Pro563 |
| Accession | AAH14863.1 |
| Calculated Molecular Weight | 60.4 kDa |
| Observed molecular weight | 74 kDa |
| Tag | C-His |

Properties

| | |
|-----------------------|--|
| Purity | > 95 % as determined by reducing SDS-PAGE. |
| Endotoxin | < 1.0 EU per µg of the protein as determined by the LAL method. |
| Storage | Store at < -20°C, stable for 6 months. Please minimize freeze-thaw cycles. |
| Shipping | This product is provided as liquid. It is shipped at frozen temperature with blue ice/gel packs. Upon receipt, store it immediately at < - 20°C. |
| Formulation | Supplied as a 0.2 µm filtered solution of 20mM Tris-HCl, 150mM NaCl, 1mM CaCl ₂ , 10% Glycerol, pH 7.5. |
| Reconstitution | Not Applicable |

Data



> 95 % as determined by reducing SDS-PAGE.

Background

Tripeptidyl-Peptidase 1 (TPP1) belongs to the peptidase S53 family. TPP1 is detected in all tissues examined with highest levels in heart and placenta and relatively similar levels in other tissues. TPP1 is lysosomal serine protease with tripeptidyl-peptidase I activity. TPP1 may act as a non-specific lysosomal peptidase which generates tripeptides from the breakdown products produced by lysosomal proteinases. TPP1 requires substrates with an unsubstituted N-terminus. TPP1 mutations have also been shown to cause neuronal ceroid lipofuscinosis type 2 (CLN2).

For Research Use Only

A Reliable Research Partner in Life Science and Medicine

Toll-free: 1-888-852-8623

Web: www.elabscience.com

Tel: 1-832-243-6086

Email: techsupport@elabscience.com

Fax: 1-832-243-6017