

# Recombinant Human SLAMF6/Ly108 Protein (aa 28-225, His Tag)



Catalog Number:PKSH033521

**Note:** Centrifuge before opening to ensure complete recovery of vial contents.

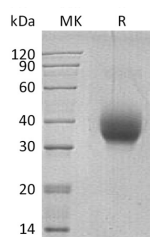
## Description

<b>Synonyms</b>	SLAM Family Member 6;Activating NK Receptor;NK-T-B-Antigen;NTB-A;CD352;SLAMF6;KALI;Ly108;NTBA;SF2000
<b>Species</b>	Human
<b>Expression Host</b>	HEK293 Cells
<b>Sequence</b>	Leu28-Lys225
<b>Accession</b>	Q96DU3
<b>Calculated Molecular Weight</b>	23.4 kDa
<b>Observed molecular weight</b>	30-50 kDa
<b>Tag</b>	C-His

## Properties

<b>Purity</b>	> 95 % as determined by reducing SDS-PAGE.
<b>Endotoxin</b>	< 1.0 EU per µg of the protein as determined by the LAL method.
<b>Storage</b>	Generally, lyophilized proteins are stable for up to 12 months when stored at -20 to -80°C. Reconstituted protein solution can be stored at 4-8°C for 2-7 days. Aliquots of reconstituted samples are stable at < -20°C for 3 months.
<b>Shipping</b>	This product is provided as lyophilized powder which is shipped with ice packs.
<b>Formulation</b>	Lyophilized from a 0.2 µm filtered solution of 20mM PB, 150mM NaCl, pH 7.4. Normally 5 % - 8 % trehalose, mannitol and 0.01% Tween80 are added as protectants before lyophilization. Please refer to the specific buffer information in the printed man
<b>Reconstitution</b>	Please refer to the printed manual for detailed information.

## Data



> 95 % as determined by reducing SDS-PAGE.

## Background

SLAM Family Member 6 (SLAMF6) is a 60 kD single-pass type I membrane protein that belongs to the SLAM subgroup of the CD2 family. Human SLAMF6/ NTB-A contains a 205 amino acid extracellular domain (ECD) with one Ig-like V-set and one Ig-like C2-set domain; a 21 amino acid transmembrane segment and an 84 amino acid cytoplasmic domain; with two immunoreceptor tyrosine-based switch motifs. SLAMF6 is a homodimer. SLAMF6 can interact with PTN6 and; upon phosphorylation; with PTN11 and SH2D1A/SAP. Phosphorylation-dependent NTB-A association with SAP is required for full production of IFN-γ by NK cells and independent of EAT-2 binding. It Triggers cytolytic activity only in natural killer cells (NK) expressing high surface densities of natural cytotoxicity receptors. On B cells; NTB-A modulates

## For Research Use Only

A Reliable Research Partner in Life Science and Medicine

Toll-free: 1-888-852-8623

Web: [www.elabscience.com](http://www.elabscience.com)

Tel: 1-832-243-6086

Email: [techsupport@elabscience.com](mailto:techsupport@elabscience.com)

Fax: 1-832-243-6017

# Recombinant Human SLAMF6/Ly108 Protein (aa 28-225, His Tag)



Catalog Number:PKSH033521

---

immunoglobulin class switching and the balance between tolerance and autoimmunity.

---

## For Research Use Only

A Reliable Research Partner in Life Science and Medicine

Toll-free: 1-888-852-8623

Tel: 1-832-243-6086

Fax: 1-832-243-6017

Web: [www.elabscience.com](http://www.elabscience.com)

Email: [techsupport@elabscience.com](mailto:techsupport@elabscience.com)