

Recombinant Human Semaphorin 3A/SEMA3A Protein (His & Flag Tag)

Catalog No. PKSH033535

Note: Centrifuge before opening to ensure complete recovery of vial contents.

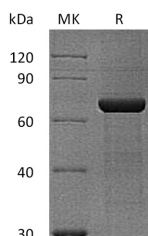
Description

Synonyms	Semaphorin III;SEMA3A;SEMAD;Hsema-I;SEMA1;SemD;Semad;coll-1;Hsema-III;Sema III
Species	Human
Expression Host	HEK293 Cells
Sequence	Lys26-Phe546
Accession	Q14563
Calculated Molecular Weight	61.3 kDa
Observed molecular weight	70-75 kDa
Tag	N-His-Flag
Bioactivity	Not validated for activity

Properties

Purity	> 95 % as determined by reducing SDS-PAGE.
Endotoxin	< 1.0 EU per µg of the protein as determined by the LAL method.
Storage	Generally, lyophilized proteins are stable for up to 12 months when stored at -20 to -80°C. Reconstituted protein solution can be stored at 4-8°C for 2-7 days. Aliquots of reconstituted samples are stable at < -20°C for 3 months.
Shipping	This product is provided as lyophilized powder which is shipped with ice packs.
Formulation	Lyophilized from a 0.2 µm filtered solution of 20mM Tris-HCl, 10% Trehalose, 100mM NaCl, 0.05% Tween 80, pH 8.5. Normally 5% - 8% trehalose, mannitol and 0.01% Tween 80 are added as protectants before lyophilization. Please refer to the specific buffer information in the printed manual.
Reconstitution	Please refer to the printed manual for detailed information.

Data



> 95 % as determined by reducing SDS-PAGE.

Background

For Research Use Only

emaphorin-3A is a secreted protein which belongs to the semaphorin family. Semaphorins are a family of secreted and cell-bound signaling molecules defined by the presence of a common 500 aa Sema domain. This protein can function as either a chemorepulsive agent; inhibiting axonal outgrowth; or as a chemoattractive agent; stimulating the growth of apical dendrites. In both cases; the protein is vital for normal neuronal pattern development. Increased expression of this protein is associated with schizophrenia and is seen in a variety of human tumor cell lines.

For Research Use Only

Toll-free: 1-888-852-8623

Web: www.elabscience.com

Tel: 1-832-243-6086

Email: techsupport@elabscience.com

Fax: 1-832-243-6017