

Recombinant Human REG1A/PSPS Protein (His Tag)

Catalog No. PKSH033542

Note: Centrifuge before opening to ensure complete recovery of vial contents.

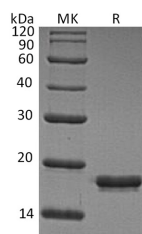
Description

| | |
|------------------------------------|--|
| Synonyms | Lithostathine-1-Alpha;Islet Cells Regeneration Factor;ICRF;Islet of Langerhans Regenerating Protein;REG;Pancreatic Stone Protein;PSP;Pancreatic Thread Protein;PTP;Regenerating Islet-Derived Protein 1-Alpha;REG-1-Alpha;Regenerating Protein I Alpha;REG1A;PSPS;PSPS1;REG |
| Species | Human |
| Expression Host | HEK293 Cells |
| Sequence | Gln23-Asn166 |
| Accession | P05451 |
| Calculated Molecular Weight | 17.3 kDa |
| Observed molecular weight | 18 kDa |
| Tag | C-His |
| Bioactivity | Not validated for activity |

Properties

| | |
|-----------------------|---|
| Purity | > 95 % as determined by reducing SDS-PAGE. |
| Endotoxin | < 1.0 EU per µg of the protein as determined by the LAL method. |
| Storage | Generally, lyophilized proteins are stable for up to 12 months when stored at -20 to -80°C. Reconstituted protein solution can be stored at 4-8°C for 2-7 days. Aliquots of reconstituted samples are stable at < -20°C for 3 months. |
| Shipping | This product is provided as lyophilized powder which is shipped with ice packs. |
| Formulation | Lyophilized from a 0.2 µm filtered solution of 20mM PB, 150mM NaCl, pH 7.2. Normally 5% - 8% trehalose, mannitol and 0.01% Tween 80 are added as protectants before lyophilization. Please refer to the specific buffer information in the printed manual. |
| Reconstitution | Please refer to the printed manual for detailed information. |

Data



> 95 % as determined by reducing SDS-PAGE.

For Research Use Only

Background

Regenerating Islet-Derived Protein 1- α (REG1A) belongs to the Reg family of secreted proteins with a C-type lectin domain. REG1A is highly expressed levels in fetal and infant brains, much lower in adult brains. REG1A promotes the maintenance and growth of pancreatic islet cells and intestinal villi. In addition to, REG1A Might act as an inhibitor of spontaneous calcium carbonate precipitation and be associated with neuronal sprouting in brain, and with brain and pancreas regeneration.

For Research Use Only