

## Recombinant Human CD155/PVR/NECL5 Protein (His Tag)

**Catalog No.** PKSH033563

**Note:** Centrifuge before opening to ensure complete recovery of vial contents.

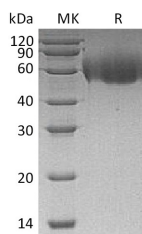
### Description

<b>Synonyms</b>	Poliovirus Receptor;Nectin-Like Protein 5;NECL-5;CD155;PVR;PVS
<b>Species</b>	Human
<b>Expression Host</b>	HEK293 Cells
<b>Sequence</b>	Trp21-Asn343
<b>Accession</b>	NP_006496
<b>Calculated Molecular Weight</b>	36.1 kDa
<b>Observed molecular weight</b>	58 kDa
<b>Tag</b>	C-His
<b>Bioactivity</b>	Loaded Human TIGIT-Fc on Protein A Biosensor, can bind Human PVR-His with an affinity constant of 4.22 nM as determined in BLI assay.

### Properties

<b>Purity</b>	> 95 % as determined by reducing SDS-PAGE.
<b>Endotoxin</b>	< 1.0 EU per µg of the protein as determined by the LAL method.
<b>Storage</b>	Store at < -20°C, stable for 6 months. Please minimize freeze-thaw cycles.
<b>Shipping</b>	This product is provided as liquid. It is shipped at frozen temperature with blue ice/gel packs. Upon receipt, store it immediately at < -20°C.
<b>Formulation</b>	Supplied as a 0.2 µm filtered solution of 20mM PB, 150mM NaCl, pH 7.4.
<b>Reconstitution</b>	Not Applicable

### Data



> 95 % as determined by reducing SDS-PAGE.

### Background

Poliovirus Receptor (PVR) is a 70 kDa type I transmembrane single-span glycoprotein that belongs to the nectin-like (Nect) family and was originally identified based on its ability to mediate the cell attachment and entry of poliovirus (PV); an etiologic agent of the central nervous system disease poliomyelitis. PVR contains three Ig-like extracellular domains; a transmembrane segment; and a cytoplasmic tail. The normal cellular function of PVR maybe the involvement of intercellular adhesion between epithelial cells. Alternate splicing of the PVR mRNA yields four different isoforms (α; β;

### For Research Use Only

$\gamma$ ; and  $\delta$ ) with identical extracellular domains.

---

## For Research Use Only

Toll-free: 1-888-852-8623

Web: [www.elabscience.com](http://www.elabscience.com)

Tel: 1-832-243-6086

Email: [techsupport@elabscience.com](mailto:techsupport@elabscience.com)

Fax: 1-832-243-6017