

# Recombinant Human PDGFR $\alpha$ /CD140a Protein (His Tag)

Catalog Number: PKSH033564



**Note:** Centrifuge before opening to ensure complete recovery of vial contents.

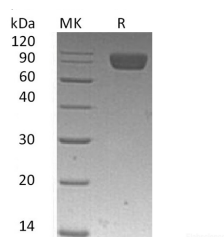
## Description

<b>Synonyms</b>	CD140A;PDGFR-2;PDGFR2;RHEPDGFRA;Platelet-derived growth factor receptor alpha;PDGFR-alpha;Alpha platelet-derived growth factor receptor;CD140 antigen-like family member A;Platelet-derived growth factor alpha receptor;Platelet-derived growth factor receptor 2
<b>Species</b>	Human
<b>Expression Host</b>	HEK293 Cells
<b>Sequence</b>	Gln24-Glu524
<b>Accession</b>	P16234
<b>Calculated Molecular Weight</b>	57.0 kDa
<b>Observed molecular weight</b>	93 kDa
<b>Tag</b>	C-His

## Properties

<b>Purity</b>	> 95 % as determined by reducing SDS-PAGE.
<b>Endotoxin</b>	< 1.0 EU per $\mu$ g of the protein as determined by the LAL method.
<b>Storage</b>	Generally, lyophilized proteins are stable for up to 12 months when stored at -20 to -80°C. Reconstituted protein solution can be stored at 4-8°C for 2-7 days. Aliquots of reconstituted samples are stable at < -20°C for 3 months.
<b>Shipping</b>	This product is provided as lyophilized powder which is shipped with ice packs.
<b>Formulation</b>	Lyophilized from a 0.2 $\mu$ m filtered solution of PBS, pH 7.4. Normally 5 % - 8 % trehalose, mannitol and 0.01 % Tween80 are added as protectants before lyophilization. Please refer to the specific buffer information in the printed manual.
<b>Reconstitution</b>	Please refer to the printed manual for detailed information.

## Data



> 95 % as determined by reducing SDS-PAGE.

## Background

Platelet-derived Growth Factor Receptor Alpha (PDGF R $\alpha$ ) is an enzyme that belongs to the class III subfamily of receptor tyrosine kinases. It is a type I transmembrane glycoprotein, and can form homo- or hetero-dimeric receptors when engaged by dimers of the PDGF family of growth factors. PDGF R $\alpha$  is strongly expressed in oligodendrocyte, lung, skin and intestinal progenitor cells and induced by inflammation or growth in culture, but is lowly expressed in most mesenchymal cells. PDGF R $\alpha$  autophosphorylates upon dimerization, activating signaling cascades in PI-3kinase Ras-

## For Research Use Only

A Reliable Research Partner in Life Science and Medicine

Toll-free: 1-888-852-8623

Web: [www.elabscience.com](http://www.elabscience.com)

Tel: 1-832-243-6086

Email: [techsupport@elabscience.com](mailto:techsupport@elabscience.com)

Fax: 1-832-243-6017

# Recombinant Human PDGFR $\alpha$ /CD140a Protein (His Tag)

Catalog Number:PKSH033564



MAP kinase, and PLC- $\gamma$  pathways. PDGF R $\alpha$  has influence on local gradients of epithelially produced PDGF-AA or PDGF-CC during formation of the cranial ,cardiac neural crest and interstitial kidney mesenchyme.

---

## For Research Use Only

A Reliable Research Partner in Life Science and Medicine

Toll-free: 1-888-852-8623

Web: [www.elabscience.com](http://www.elabscience.com)

Tel: 1-832-243-6086

Email: [techsupport@elabscience.com](mailto:techsupport@elabscience.com)

Fax: 1-832-243-6017