

Recombinant Human Cyclophilin B/PPIB Protein (His Tag)

Catalog Number:PKSH033569

DIA • AN[®]
by Elabscience

Note: Centrifuge before opening to ensure complete recovery of vial contents.

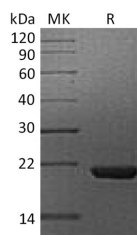
Description

Synonyms	CYP-S1;CYPB;HEL-S-39;O19;SCYLP
Species	Human
Expression Host	HEK293 Cells
Sequence	Asp34-Ala212
Accession	P23284
Calculated Molecular Weight	20.9 kDa
Observed molecular weight	21 kDa
Tag	C-His

Properties

Purity	> 95 % as determined by reducing SDS-PAGE.
Endotoxin	< 1.0 EU per µg of the protein as determined by the LAL method.
Storage	Generally, lyophilized proteins are stable for up to 12 months when stored at -20 to -80°C. Reconstituted protein solution can be stored at 4-8°C for 2-7 days. Aliquots of reconstituted samples are stable at < -20°C for 3 months.
Shipping	This product is provided as lyophilized powder which is shipped with ice packs.
Formulation	Lyophilized from a 0.2 µm filtered solution of 20mM PB, 6% Sucrose, 4% Mannitol, 50mM NaCl, 0.05% Tween 80, pH6.0. Normally 5 % - 8 % trehalose, mannitol and 0.01% Tween80 are added as protectants before lyophilization. Please refer to the specifi
Reconstitution	Please refer to the printed manual for detailed information.

Data



> 95 % as determined by reducing SDS-PAGE.

Background

Cyclophilin B (SCYLP, CyPB and peptidyl-prolyl cis-trans isomerase B) is a 24 kDa glycoprotein member of the B subfamily of the cyclophilin-type PPIase family of molecules. It is both secreted and retained in the ER. When secreted, Cyclophilin B mediates chemotaxis and T cell adhesion to fibronectin. This is likely due to its prolyl cis/trans isomerase activity. Intracellularly, Cyclophilin B appears to serve as a molecular chaperone for molecules destined for secretion. It does so via stabilization, and facilitating the activity of additional chaperones.

For Research Use Only

A Reliable Research Partner in Life Science and Medicine

Toll-free: 1-888-852-8623

Web: www.elabscience.com

Tel: 1-832-243-6086

Email: techsupport@elabscience.com

Fax: 1-832-243-6017