

## Recombinant Human IL-8/CXCL8 Protein (aa 23-99)

**Catalog No.** PKSH033608

**Note:** Centrifuge before opening to ensure complete recovery of vial contents.

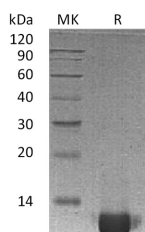
### Description

<b>Synonyms</b>	Interleukin-8;IL-8;C-X-C Motif Chemokine 8;Emoxtakin;Granulocyte Chemotactic Protein 1;GCP-1;Monocyte-Derived Neutrophil Chemotactic Factor;MDNCF;Monocyte-Derived Neutrophil-Activating Peptide;MONAP;Neutrophil-Activating Protein 1;NAP-1;Protein 3-10C;T-Cell Chemotactic Factor;GCP1;IL8;Interleukin-8;LECT;LUCT;LYNAP;MDNCF;MONAP;NAF;NAP-1;NAP1
<b>Species</b>	Human
<b>Expression Host</b>	E.coli
<b>Sequence</b>	Ala23-Ser99
<b>Accession</b>	P10145
<b>Calculated Molecular Weight</b>	8.9 kDa
<b>Observed molecular weight</b>	11 kDa
<b>Tag</b>	None
<b>Bioactivity</b>	Not validated for activity

### Properties

<b>Purity</b>	> 95 % as determined by reducing SDS-PAGE.
<b>Endotoxin</b>	< 1.0 EU per µg of the protein as determined by the LAL method.
<b>Storage</b>	Generally, lyophilized proteins are stable for up to 12 months when stored at -20 to -80°C. Reconstituted protein solution can be stored at 4-8°C for 2-7 days. Aliquots of reconstituted samples are stable at < -20°C for 3 months.
<b>Shipping</b>	This product is provided as lyophilized powder which is shipped with ice packs.
<b>Formulation</b>	Lyophilized from a 0.2 µm filtered solution of PBS, pH 7.4. Normally 5 % - 8 % trehalose, mannitol and 0.01% Tween80 are added as protectants before lyophilization. Please refer to the specific buffer information in the printed manual.
<b>Reconstitution</b>	Please refer to the printed manual for detailed information.

### Data



> 95 % as determined by reducing SDS-PAGE.

### For Research Use Only

## Background

Interleukin-8 (IL-8) belongs to the neutrophil-specific CXC family of chemokines. It is one of the initial cytokines released from a variety of cell types; including T cells; endothelial cells and fibroblasts; in response to an inflammatory stimulus and acts by recruiting neutrophils; T-cells and basophils to the site of inflammation. Elevated Interleukin-8 levels are associated with the onset of a variety of disease states.

---

## For Research Use Only