

# Recombinant Human IL-1R8/IL1RAPL1 Protein (Fc Tag)



Catalog Number:PKSH033635

**Note:** Centrifuge before opening to ensure complete recovery of vial contents.

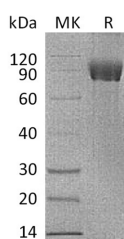
## Description

<b>Synonyms</b>	Interleukin-1 Receptor Accessory Protein-Like 1;IL-1-RAPL-1;IL-1RAPL-1;IL1RAPL-1;Oligophrenin-4;Three Immunoglobulin Domain-Containing IL-1 Receptor-Related 2;TIGIRR-2;X-Linked Interleukin-1 Receptor Accessory Protein-Like 1;IL1RAPL1;OPHN4
<b>Species</b>	Human
<b>Expression Host</b>	HEK293 Cells
<b>Sequence</b>	Leu19-Thr357
<b>Accession</b>	Q9NZN1
<b>Calculated Molecular Weight</b>	68.0 kDa
<b>Observed molecular weight</b>	80-100 kDa
<b>Tag</b>	C-Fc

## Properties

<b>Purity</b>	> 95 % as determined by reducing SDS-PAGE.
<b>Endotoxin</b>	< 1.0 EU per µg of the protein as determined by the LAL method.
<b>Storage</b>	Generally, lyophilized proteins are stable for up to 12 months when stored at -20 to -80°C. Reconstituted protein solution can be stored at 4-8°C for 2-7 days. Aliquots of reconstituted samples are stable at < -20°C for 3 months.
<b>Shipping</b>	This product is provided as lyophilized powder which is shipped with ice packs.
<b>Formulation</b>	Lyophilized from a 0.2 µm filtered solution of PBS, pH7.4. Normally 5 % - 8 % trehalose, mannitol and 0.01% Tween80 are added as protectants before lyophilization. Please refer to the specific buffer information in the printed manual.
<b>Reconstitution</b>	Please refer to the printed manual for detailed information.

## Data



> 95 % as determined by reducing SDS-PAGE.

## Background

Interleukin-1 receptor accessory protein-like 1; also known as IL1RAPL1; can be detected at low levels in heart; skeletal muscle; ovary; skin; amygdala; caudate nucleus; corpus callosum; hippocampus; substantia nigra and thalamus. IL1RAPL1 functions as a homodimer; it interacts with NCS1; PTPRD. This interaction is PTPRD-splicing-dependent and induces pre- and post-synaptic differentiation of neurons and is required for IL1RAPL1-mediated synapse formation. During dendritic spine formation; it can bidirectionally induce pre- and post-synaptic differentiation of neurons by trans-

## For Research Use Only

A Reliable Research Partner in Life Science and Medicine

Toll-free: 1-888-852-8623

Web: [www.elabscience.com](http://www.elabscience.com)

Tel: 1-832-243-6086

Email: [techsupport@elabscience.com](mailto:techsupport@elabscience.com)

Fax: 1-832-243-6017

# Recombinant Human IL-1R8/IL1RAPL1 Protein (Fc Tag)

Catalog Number:PKSH033635



synaptically binding to PTPRD.

---

## For Research Use Only

A Reliable Research Partner in Life Science and Medicine

Toll-free: 1-888-852-8623

Tel: 1-832-243-6086

Fax: 1-832-243-6017

Web: [www.elabscience.com](http://www.elabscience.com)

Email: [techsupport@elabscience.com](mailto:techsupport@elabscience.com)