

Recombinant Human IL1F10/IL-38 Protein

Catalog Number:PKSH033637



Note: Centrifuge before opening to ensure complete recovery of vial contents.

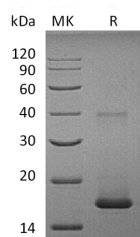
Description

Synonyms	Interleukin-1 Family Member 10;IL-1F10;FIL1 Theta;Interleukin-1 HY2;IL-1HY2;Interleukin-1 Theta;IL-1 Theta;IL1F10;FIL1T;IL1HY2;IL-38
Species	Human
Expression Host	E.coli
Sequence	Met1-Trp152
Accession	Q8WWZ1
Calculated Molecular Weight	17.8 kDa
Observed molecular weight	21 kDa
Tag	C-His

Properties

Purity	> 98 % as determined by reducing SDS-PAGE.
Endotoxin	< 0.1 EU per µg of the protein as determined by the LAL method.
Storage	Generally, lyophilized proteins are stable for up to 12 months when stored at -20 to -80°C. Reconstituted protein solution can be stored at 4-8°C for 2-7 days. Aliquots of reconstituted samples are stable at < -20°C for 3 months.
Shipping	This product is provided as lyophilized powder which is shipped with ice packs.
Formulation	Lyophilized from sterile PBS, pH 7.4. Normally 5 % - 8 % trehalose, mannitol and 0.01 % Tween80 are added as protectants before lyophilization. Please refer to the specific buffer information in the printed manual.
Reconstitution	Please refer to the printed manual for detailed information.

Data



> 98 % as determined by reducing SDS-PAGE.

Background

Human Interleukin 1 Family Member 10 (IL-1F10) is thought to participate in a network of Interleukin 1 cytokine family members to regulate adapted and innate immune responses. IL-1F10 was expressed in fetal skin, spleen and tonsil, mostly in the basal epithelia of skin and in proliferating B-cells of the tonsil. IL-1F10 binds soluble IL-1 receptor type 1 and may be implicated in regulating adapted and innate immune responses. Two alternatively spliced transcript variants encoding the same protein have been reported.

For Research Use Only

A Reliable Research Partner in Life Science and Medicine

Toll-free: 1-888-852-8623

Web: www.elabscience.com

Tel: 1-832-243-6086

Email: techsupport@elabscience.com

Fax: 1-832-243-6017