

Recombinant Human ROR1 Protein (Fc Tag)

Catalog Number:PKSH033648



Note: Centrifuge before opening to ensure complete recovery of vial contents.

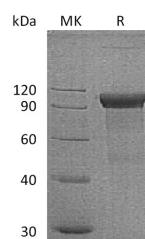
Description

Synonyms	Inactive tyrosine-protein kinase transmembrane receptor ROR1;Neurotrophic tyrosine kinase;receptor-related 1;ROR1;NTRKR1
Species	Human
Expression Host	HEK293 Cells
Sequence	Gln30-Glu403
Accession	Q01973
Calculated Molecular Weight	68.9 kDa
Observed molecular weight	90-110 kDa
Tag	C-Fc

Properties

Purity	> 95 % as determined by reducing SDS-PAGE.
Endotoxin	< 1.0 EU per µg of the protein as determined by the LAL method.
Storage	Generally, lyophilized proteins are stable for up to 12 months when stored at -20 to -80°C. Reconstituted protein solution can be stored at 4-8°C for 2-7 days. Aliquots of reconstituted samples are stable at < -20°C for 3 months.
Shipping	This product is provided as lyophilized powder which is shipped with ice packs.
Formulation	Lyophilized from a 0.2 µm filtered solution of PBS, pH 7.4. Normally 5 % - 8 % trehalose, mannitol and 0.01% Tween80 are added as protectants before lyophilization. Please refer to the specific buffer information in the printed manual.
Reconstitution	Please refer to the printed manual for detailed information.

Data



> 95 % as determined by reducing SDS-PAGE.

Background

ROR1, also known as Neurotrophic tyrosine kinase, receptor-related 1, belongs to the ROR subfamily of Tyr protein kinase family, a protein kinase superfamily. It has very low kinase activity in vitro and is unlikely to function as a tyrosine kinase in vivo. Human ROR1 is a type I transmembrane protein with 937 amino acids (aa) in length. It contains a 29 aa signal sequence, a 377 aa extracellular domain (ECD), a 21 aa transmembrane segment, and a 510 aa cytoplasmic region. Human ROR1 shares 97% and 58% aa sequence identity with mouse ROR1 and human ROR2, respectively. ROR1 may act as a receptor for wnt ligand WNT5A which may result in the inhibition of WNT3A-mediated signaling. ROR1 expressed strongly in human heart, lung and kidney, but weakly in the CNS. Its Isoform Short is strongly expressed in

For Research Use Only

A Reliable Research Partner in Life Science and Medicine

Toll-free: 1-888-852-8623

Web: www.elabscience.com

Tel: 1-832-243-6086

Email: techsupport@elabscience.com

Fax: 1-832-243-6017

Recombinant Human ROR1 Protein (Fc Tag)

Catalog Number:PKSH033648



fetal and adult CNS and in a variety of human cancers, including those originating from CNS or PNS neuroectoderm.

For Research Use Only

A Reliable Research Partner in Life Science and Medicine

Toll-free: 1-888-852-8623

Tel: 1-832-243-6086

Fax: 1-832-243-6017

Web: www.elabscience.com

Email: techsupport@elabscience.com