

# Recombinant Human GM-CSF/CSF2 Protein (E.coli)

Catalog Number:PKSH033662



**Note:** Centrifuge before opening to ensure complete recovery of vial contents.

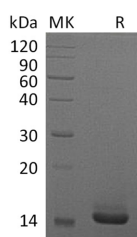
## Description

<b>Synonyms</b>	Granulocyte-Macrophage Colony-Stimulating Factor;GM-CSF;Colony-Stimulating Factor;CSF;Molgramostin;Sargramostim;CSF2;GMCSF
<b>Species</b>	Human
<b>Expression Host</b>	E.coli
<b>Sequence</b>	Ala18-Glu144
<b>Accession</b>	P04141
<b>Calculated Molecular Weight</b>	15.4 kDa
<b>Observed molecular weight</b>	15 kDa
<b>Tag</b>	N-His

## Properties

<b>Purity</b>	> 98 % as determined by reducing SDS-PAGE.
<b>Endotoxin</b>	< 0.1 EU per µg of the protein as determined by the LAL method.
<b>Storage</b>	Generally, lyophilized proteins are stable for up to 12 months when stored at -20 to -80°C. Reconstituted protein solution can be stored at 4-8°C for 2-7 days. Aliquots of reconstituted samples are stable at < -20°C for 3 months.
<b>Shipping</b>	This product is provided as lyophilized powder which is shipped with ice packs.
<b>Formulation</b>	Lyophilized from sterile PBS,pH 8.0. Normally 5 % - 8 % trehalose, mannitol and 0.01 % Tween80 are added as protectants before lyophilization. Please refer to the specific buffer information in the printed manual.
<b>Reconstitution</b>	Please refer to the printed manual for detailed information.

## Data



> 98 % as determined by reducing SDS-PAGE.

## Background

Granulocyte-Macrophage Colony Stimulating Factor (GM-CSF) was initially characterized as a growth factor that can support the in vitro colony formation of granulocyte-macrophage progenitors. It is produced by a number of different cell types (including activated T cells; B cells; macrophages; mast cells; endothelial cells and fibroblasts) in response to cytokine of immune and inflammatory stimuli. Besides granulocyte-macrophage progenitors; GM-CSF is also a growth factor for erythroid; megakaryocyte and eosinophil progenitors. On mature hematopoietic; monocytes/ macrophages and eosinophils. GM-CSF has a functional role on non-hematopoietic cells. It can induce human endothelial cells to migrate and proliferate. Additionally; GM-CSF can also stimulate the proliferation of a number of tumor cell lines; including

## For Research Use Only

A Reliable Research Partner in Life Science and Medicine

Toll-free: 1-888-852-8623

Web: [www.elabscience.com](http://www.elabscience.com)

Tel: 1-832-243-6086

Email: [techsupport@elabscience.com](mailto:techsupport@elabscience.com)

Fax: 1-832-243-6017

# Recombinant Human GM-CSF/CSF2 Protein (E.coli)

Catalog Number:PKSH033662



osteogenic sarcoma; carcinoma and adenocarcinoma cell lines.

---

## For Research Use Only

A Reliable Research Partner in Life Science and Medicine

Toll-free: 1-888-852-8623

Web: [www.elabscience.com](http://www.elabscience.com)

Tel: 1-832-243-6086

Email: [techsupport@elabscience.com](mailto:techsupport@elabscience.com)

Fax: 1-832-243-6017