

## Recombinant Human CGA&CGB3 Heterodimer Protein (His & Flag Tag)

Catalog No. PKSH033665

**Note:** Centrifuge before opening to ensure complete recovery of vial contents.

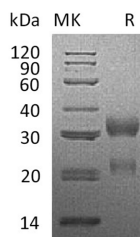
### Description

<b>Synonyms</b>	Beta-Nerve Growth Factor;Beta-NGF;NGF;NGFB
<b>Species</b>	Human
<b>Expression Host</b>	HEK293 Cells
<b>Sequence</b>	Ala25-Ser116&Ser21-Gln165
<b>Accession</b>	P01215&P0DN86
<b>Calculated Molecular Weight</b>	11.6&16.6 kDa
<b>Observed molecular weight</b>	22&30-35 kDa
<b>Tag</b>	C-Flag & C-His
<b>Bioactivity</b>	Not validated for activity

### Properties

<b>Purity</b>	> 95 % as determined by reducing SDS-PAGE.
<b>Endotoxin</b>	< 1.0 EU per µg of the protein as determined by the LAL method.
<b>Storage</b>	Generally, lyophilized proteins are stable for up to 12 months when stored at -20 to -80°C. Reconstituted protein solution can be stored at 4-8°C for 2-7 days. Aliquots of reconstituted samples are stable at < -20°C for 3 months.
<b>Shipping</b>	This product is provided as lyophilized powder which is shipped with ice packs.
<b>Formulation</b>	Lyophilized from a 0.2 µm filtered solution of PBS, pH 7.4. Normally 5 % - 8 % trehalose, mannitol and 0.01% Tween80 are added as protectants before lyophilization. Please refer to the specific buffer information in the printed manual.
<b>Reconstitution</b>	Please refer to the printed manual for detailed information.

### Data



> 95 % as determined by reducing SDS-PAGE.

### Background

Glycoprotein hormones alpha chain, also known as CGA, belongs to the glycoprotein hormones subunit alpha family. The subunit of CGA is a heterodimer consists of a common alpha chain and a unique beta chain which confers biological

### For Research Use Only

specificity to thyrotropin, lutropin, follitropin and gonadotropin. It has positive regulation of cell migration, cell proliferation and transcription from RNA polymerase II promoter and participates in the peptide hormone processing and signal transduction.